

Islam Knit Designs Ltd. (Unit-2)

301 NOYAPARA, KASHIMPUR, GAZIPUR
(23.989034N, 90.318997E)
23rd May 2017





Observations



Missing Bolts



Bolt missing between the connection of sub beam and main beam



Bolt missing of bracing at 4th floor



Bolt missing at joint of Main Beam

During inspection, bolts were found missing at some connections on several floors. Building Engineer is required to install the missing bolts.

Observation: Missing bolts



Loose bracing and improper connections at roof shed of the factory building



Loose connection between rafters



Loose horizontal bracing observed at roof shed of the factory building

During inspection, Loose bracing and improper connections observed at roof top shed of the factory building. Factory is required to tighten the loose connections and bracings.

Observation: Loose bracing and improper connections at roof shed of the factory building



Corrosion observed at steel sections



Corrosion at joint



Corrosion observed at ground floor



Corrosion at steel column



Corrosion at Sub Beam



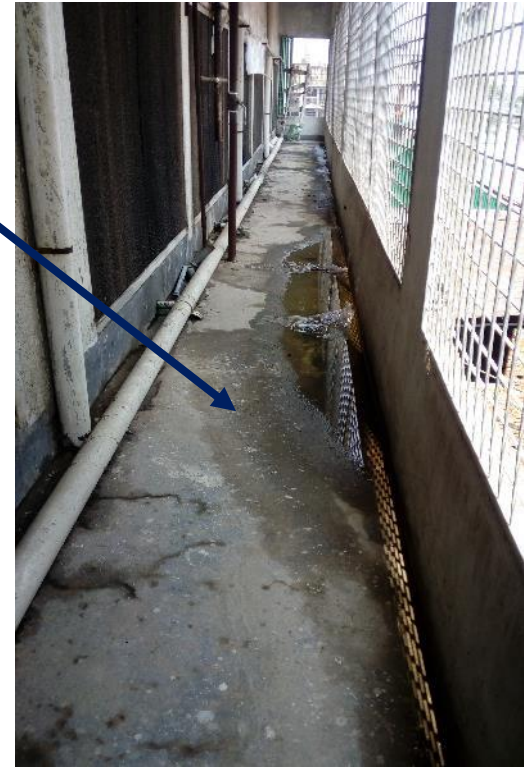
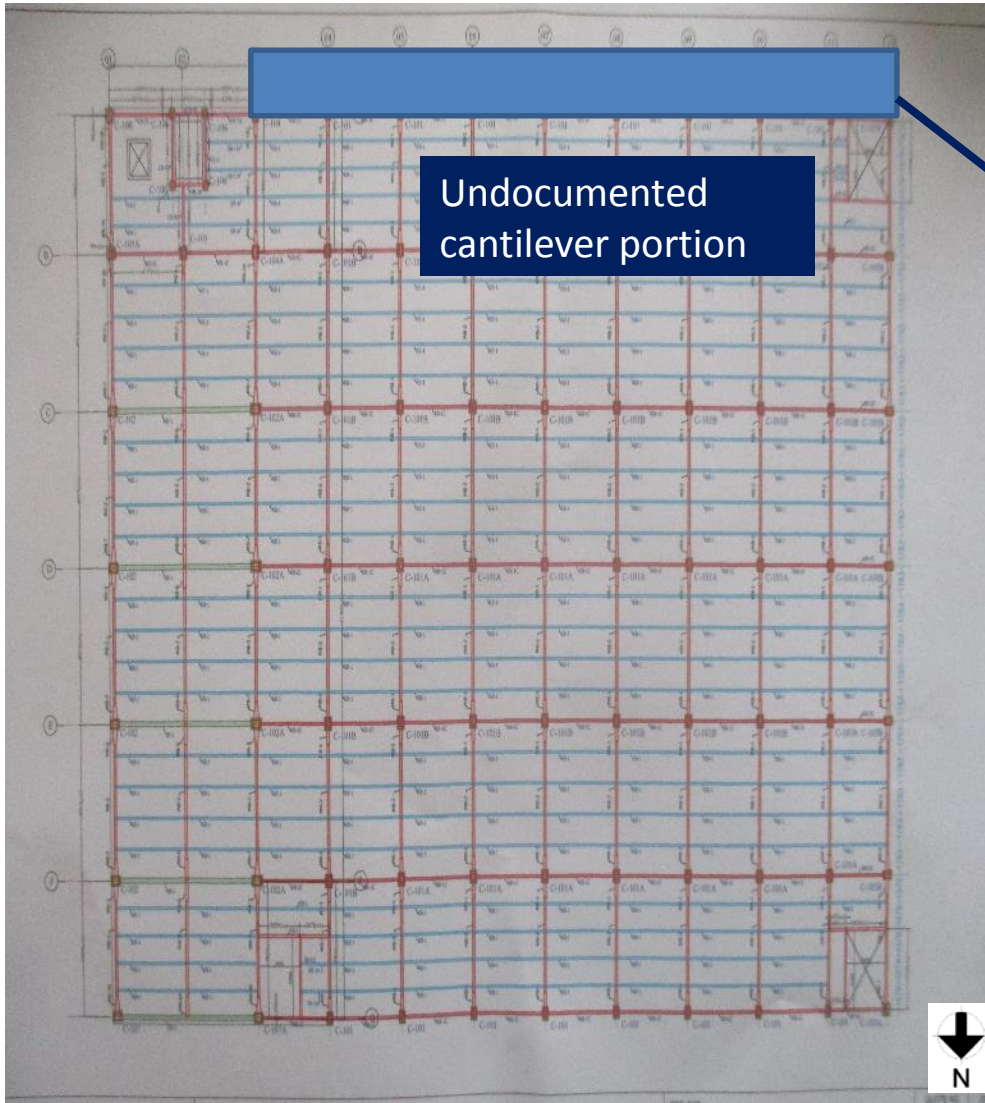
Corrosion at joint

During inspection, Corrosion observed at structural steel section at several floors of the building.

Observation: Corrosion observed at steel sections



Undocumented cantilever portion observed

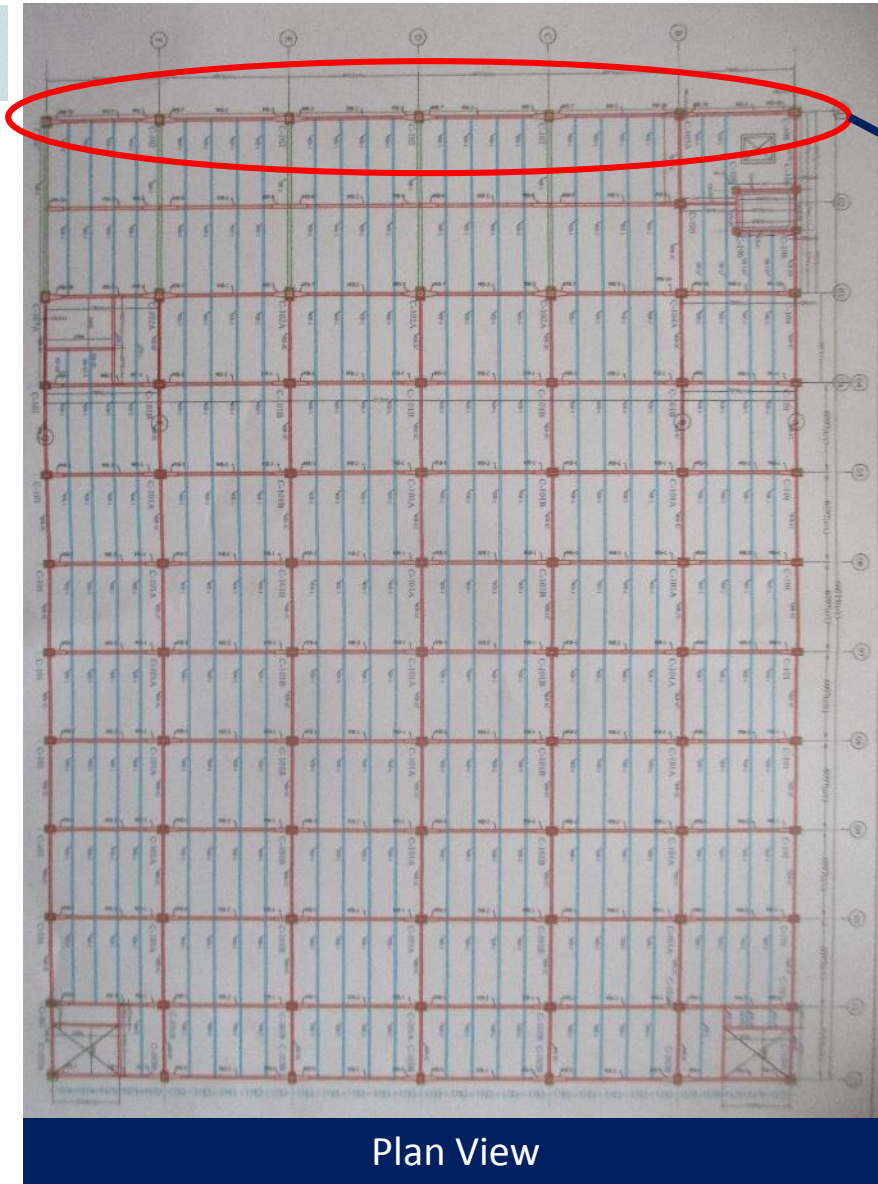


During inspection, a undocumented cantilever portion was observed. Building Engineer is required to update as built drawing including this.

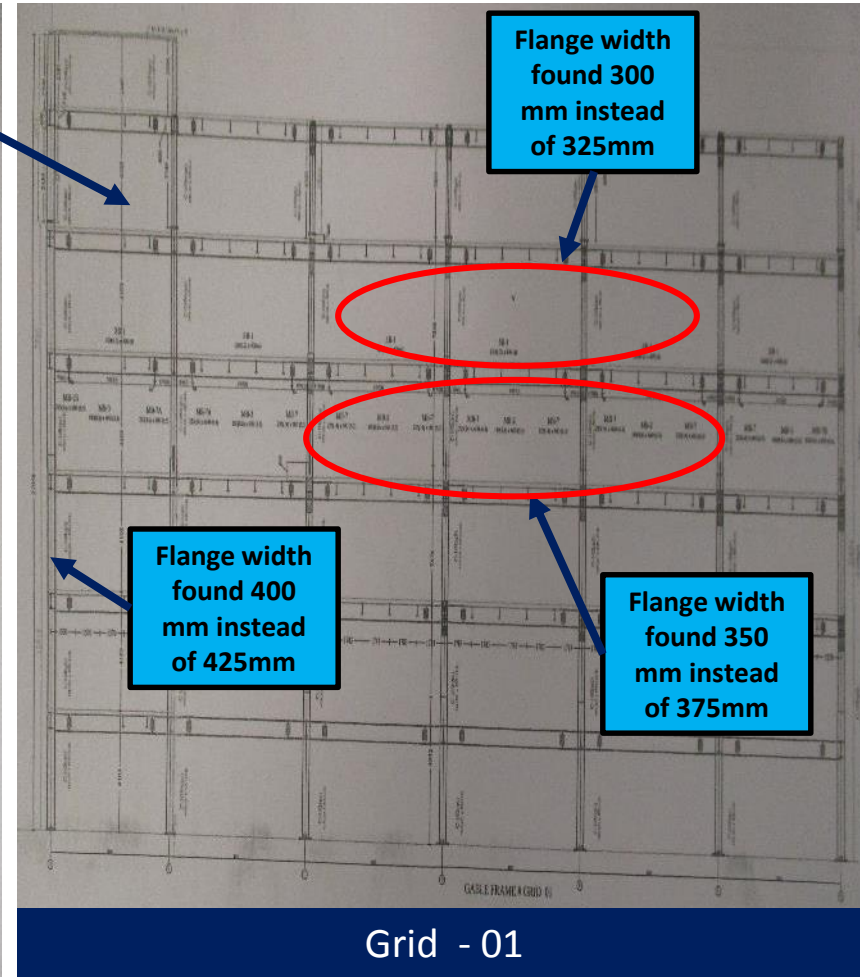
Observation: Undocumented cantilever portion observed



Discrepancy observed in construction drawings and site condition



Plan View



During inspection, the flange width found less than provided drawing. Building Engineer required to prepare As Built drawing.

Observation: Discrepancy observed in construction drawings and site condition



Apparently Non-Engineered steel roof



1st floor roof shed of generator building



Truss end poorly welded with the rebar of column



Non engineered roof shed of boiler



Connection of roof truss

During inspection, The 1st floor generator shed and boiler shed were seemed to be non- engineered. Building engineer is required to check the stability of the roof sheds against wind loads. Additionally no drawings were available for those structures.

Observation: Apparently Non-Engineered steel roof



Problems Observed

Factory Building

Item 1: Missing Bolts

Item 2: Loose bracing and connections at roof shed of the factory building

Item 3: Corrosion observed at steel sections

Item 4: Undocumented cantilever portion observed

Item 5: Discrepancy observed in construction drawings and site condition

Generator shed and boiler shed

Item 6: Apparently Non-Engineered steel roof



Priority Actions

Item No.	Observation	Recommended Action Plan	Recommended Timeline
1	Missing bolts: (Factory Building)	Factory is required to install the missing bolts.	6-weeks
2	Loose bracing and connections at roof shed of the factory building: (Factory Building)	Factory required to reinstalled the loose bracings and connections between rafter or to take any necessary remedial measures if required.	6-weeks
3	Corrosion observed at steel sections (Factory Building)	Factory required to repair the corroded steel section either by rust proof paint or any recommended repairing action.	6-weeks
4	Undocumented cantilever portion observed: (Factory Building)	Factory required to prepare As Built drawings incorporating the cantilever portion.	6-weeks
5	Undocumented cantilever portion observed: (Factory Building)	Factory engineer to check the cantilever beam capacity.	6-weeks
6	Undocumented cantilever portion observed: (Factory Building)	Carryout remedial measures if required.	6-months

Item No.	Observation	Recommended Action Plan	Recommended Timeline
7	Discrepancy observed in construction drawings and site condition: (Factory Building)	Factory engineer to check, collect information and produce accurate and complete as-built documentation.	6-weeks
8	Connections Appeared to be Non Engineered: (Generator , Compressor & Sub-station shed and boiler shed)	Factory Engineer to check, collect information and produce accurate and complete as-built documentation.	6-weeks
9	Connections Appeared to be Non Engineered: (Generator , Compressor & Sub-station shed and boiler shed)	Factory Engineer required to check the stability of the roof sheds against lateral loads.	6-weeks
10	Connections Appeared to be Non Engineered: (Generator , Compressor & Sub-station shed and boiler shed)	Implement any remedial action where necessary.	6-months