

# FIRE SAFETY INSPECTION REPORT

ISLAM KNIT DESIGNS LTD (UNIT 2)

ACCORD ID: 12806

301 NOYAPARA, KASHIMPUR, GAZIPUR  
(23.9888487, 90.3190966)

OTHER FACTORY (S): NONE



Inspected By: Shabbir Hossain and Mahfuza Khanom  
Date: 23 May, 2017

# Fire Safety Inspection Report

## ISLAM KNIT DESIGNS LTD (UNIT 2)

### Introduction:

Islam Knit Designs Ltd (Unit 2) was surveyed for fire safety on 23 May, 2017 by The Accord Inspection Team. The purpose of the survey was to identify significant fire safety issues and to provide recommendations for remediation based on applicable standards specified by the Accord. The scope of this initial fire safety inspection was limited to the review and identification of major fire safety issues. The inspection did not include identification of minor deficiencies, which will be further addressed as part of follow-up inspections.

### Limitations:

The information in this fire safety inspection report was obtained during a visit to the facility and during interviews with local factory management. It has not been possible to provide independent verification for all the information and data collected, and therefore, The Accord cannot accept general responsibility for omissions or errors arising from inaccuracies in this report from the information obtained.

The findings and recommendations in this report are not intended to imply, guarantee, ensure or warrant compliance with any government regulations. Additionally, the results do not imply in any way that compliance with the findings or recommendations as stated in this report will eliminate all hazards, risks or exposures or that hazards, risks or exposures not referred to in this report do not exist. Compliance with the findings and recommendations stated in this report does not relieve the factory owner from obligation to comply with specific project requirements, industry standards, or the provisions of any local government regulations.



**General Factory Information:**

**Factory Building Name: Islam Knit Designs Ltd (Unit 2)**

**Factory Address: 301 Noyapara, Kashimpur, Gazipur.**

**Points of contact:**

<p>Name: Mrs. Rahima Nahar Designation: Executive Director Mobile No: 01711614930 E-mail: rahima@islam-garments.com</p>	<p>Name: Md. Nazrul Islam Designation: Manager (Compliance &amp; HRD) Mobile No: 01713331097 E-mail: nazrulislam@islam-garments.com</p>
	



## Findings & Recommendations :

Following table summarizes the major fire safety issues identified during the inspection. Recommendations have been provided to address each issue. An implementation schedule shall be developed by the factory to remediate each of the findings. The specific timing of improvements, including any requested extensions due to design/ installation constraints, shall be submitted to the Accord for approval.

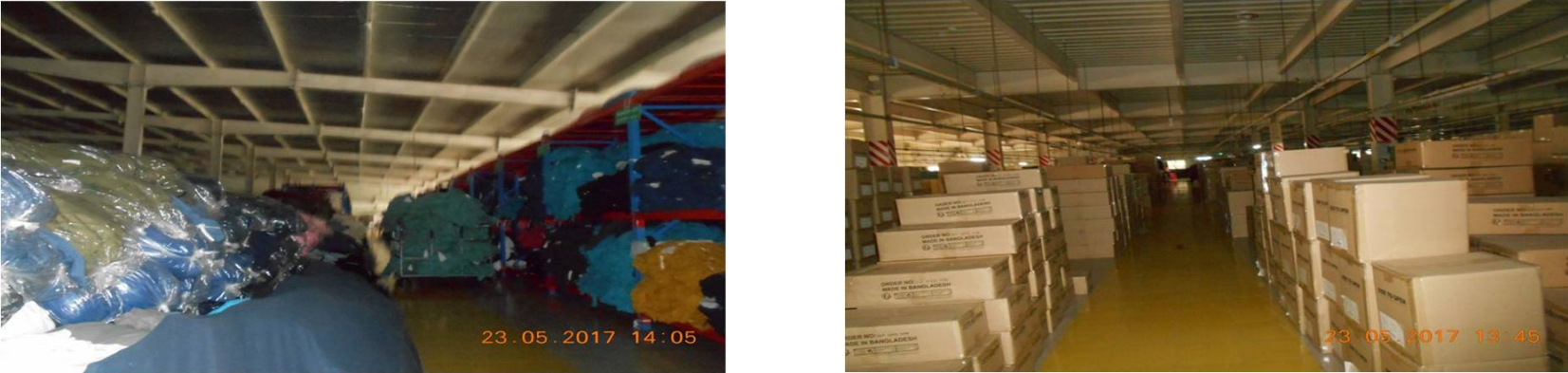
SI No.	Category	Findings	Required Action	Remediation Time Frame
1	Fire Rated Construction	The exit stairs enclosures are not separated from work areas and other spaces on each floor by fire-rated construction(Non rated doors, unsealed penetrations and openings etc.). Lift machine room, toilets are also not separated by fire rated separation. Fire doors have been found damaged in few location.	Provide minimum 1-hr rated doors for buildings with 3 or fewer stories and 1.5-hr fire rated doors for buildings that are 4 or more stories. Seal all unprotected openings to separate the exit stairs from work areas and other building spaces such as toilets, lift machine room etc. on all floor levels. Ensure that the fire doors are self-closing and positive latching and that they are provided with fire exit (panic) hardware where serving production floors. If fire doors are required to be held open for functional reasons, provide automatic closing devices tied to the fire alarm system. Once fire doors are installed, every door in a stair enclosure serving more than 5 stories shall be provided with re-entry unless it meets.	Within 3 months





2	Fire Rated Construction	Rooms used for combustible storage are not separated by fire rated construction properly. Location: Fabric store in Ground floor and wastage room in first floor.	Provide dedicated storage room separated by minimum 1-hr fire-rated construction.	Within 3 months
---	-------------------------	--	---	-----------------



3	Fire Rated Construction	Areas used for combustible storage are not separated by fire rated construction. Location: Second floor and fifth floor.	<p>Provide dedicated storage rooms separated by minimum 1-hr fire-rated construction.</p> <p>Where separate storage rooms are not feasible, provide defined storage areas and limit the storage arrangement as follows:</p> <ul style="list-style-type: none"> <li>- Maximum height of 2.4m and maximum area of 23m<sup>2</sup></li> <li>- If sprinkler protected: maximum height of 3.66m and maximum area of 93m<sup>2</sup></li> </ul> <p>Separate areas of unenclosed combustible storage by a minimum clear distance of 3m.</p>	Within 3 months
				
4	Fire Rated Construction	The generator, boiler, transformer, LT panel, compressor room, fire pump room is not separated by fire rated construction (openings, non-rated doors, penetrations). Location: Utility shed in South-East side.	Separate the generator, boiler, transformer, LT panel, compressor room by a minimum 2-hr fire rated construction. Seal and/or protected all openings to maintain fire separations.	Within 3 months





5	Fire Rated Construction	Dining area is not properly separated from machine store and other occupancies by fire rated construction. Location: Ground floor	Provide proper fire rated separation for dining area with other occupancies.	Within 3 months
---	-------------------------	--	--	-----------------



6	Fire Rated Construction	The elevator (South-East side) discharges inside the production floor	Provide a minimum 2-hr fire rated construction to separate the elevator shaft from each floor level. Seal all penetrations and openings in floors/ceiling assemblies to maintain the fire separation.	Within 3 months
---	-------------------------	---	---	-----------------




7	Fire Rated Construction	Unsealed penetrations and openings are located in the fire rated floor/ceiling assemblies. Location: South-East BBT riser for all floor.	Seal all penetrations and openings in floors/ceiling assemblies to maintain the fire separation.	Within 3 months
---	-------------------------	--	--	-----------------





8	Fire Rated Construction	Hazardous materials / flammable liquid storage area is not separated by fire-rated construction. Location: East egress path.	Separate the hazardous materials / flammable liquid storage room by a minimum 2-hr fire-rated construction. Seal and/or protect all openings to maintain the required fire separations.	Within 3 months
---	-------------------------	--	---	-----------------



9	Fire Rated Construction	Exit discharge path is not separated by fire rated construction. Location: East discharge path.	Seal all penetrations and openings to the interior of the building along the discharge path to provide a minimum 1-hr fire separation.	Within 3 months
				
10	Egress	Egress doors/gates with locking features not complying with NFPA101 are provided at building. Location: Ground floor building main exit gates.	Remove locking features from all egress doors/gates. If locks are required for security reasons, utilize specialized door locking features complying with NFPA101.	Immediate





11	Egress	Egress door serving 50 or more occupants does not swing in the direction of egress travel. Location: Ground floor	Modify the egress door to swing in the direction of egress travel.	Within 1 month
----	--------	--	--	----------------



12	Egress	Storage was located in the exit stair. Location: South-East exit stair	Remove all storage from exit stairs.	Immediate
----	--------	---	--------------------------------------	-----------





13	Egress	<p>The egress path along means of egress has interrupted by obstruction/storage.          Location: Storage on the egress path of jut boiler and reception located in North-East &amp; North-West exit in Ground floor</p>	<p>Means of egress shall be maintained continuously free and clear of all obstructions/storage.</p>	<p>Immediate</p>
----	--------	--	---	------------------



14	Egress	Exit capacity (381) is not adequate for the occupant load (500) in Ground floor (Dining area).	Reduce occupant load to not more than available exit capacity. Or Provide additional exits to increase exit capacity.	Immediate
15	Egress	Doors have widths less than the required minimum width . Location: South-East exit stair doors and Dining and storage doors in Ground floor.	Doors in a means of egress shall have a minimum width of 0.8 m (32 in.).	Within 3 months



16	Egress	Handrails are not provided in the exit stair. Location: South-East exit stair	Provide handrails on both sides of the exit stair. New handrails shall have a minimum height of 865 mm (34 in.) and a maximum height of 965 mm (38 in.) as measured from the leading edge of the tread. Intermediate handrails shall be provided when the stair width exceeds 2.2 m (87 in.).	Within 3 months
----	--------	--	---	-----------------





17	Egress	Building did not have stair designation signs and occupant load signs at the required locations.	Provide stair designation signs and occupant load signs at the required locations.	Immediate
18	Egress	Parapets or guards are provided in occupied roof which is less than 1067mm (42 inch.).	Provide parapets or guards with a minimum height of 1067mm (42 inch.).	Within 3 months

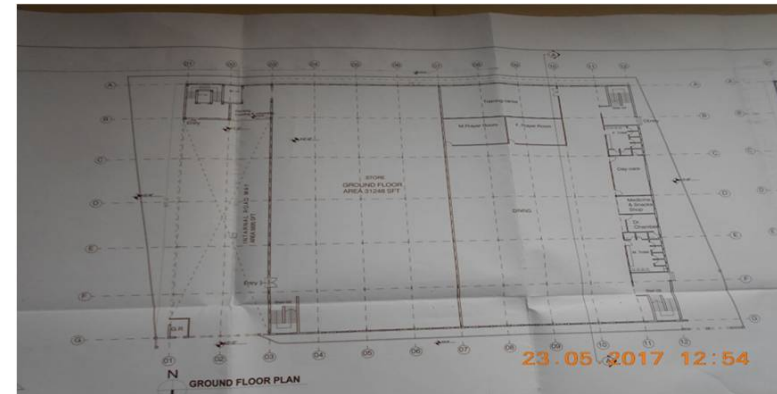




19	Fire Detection and Alarm System	The fire detection system is antiquated, not a listed system, and does not provide alarm and notification features consistent with acceptable standards.	Replace the fire detection system with a new, listed addressable fire detection system and modify the installation of existing system in accordance with NFPA 72.	Design within 4 months, Install within 9 months
----	---------------------------------	--	---	---



20	Fire Detection and Alarm System (ITM)	Inspection, testing, and maintenance for the fire alarm system is not in accordance with NFPA 72.	Inspect, test and maintain the fire alarm system, and keep written records on-site, in accordance with NFPA 72 or as per Accord standard.	Within 3 months
21	Fire Protection System	The existing building greater than 2 stories and per floor area exceeding 2000 sqm (22000 sqft) is not provided with automatic sprinkler protection.	Provide automatic sprinkler protection throughout the building in accordance with NFPA 13. or Confirm the fire resistance of structural members accordance with BNBC Part 3 Chapter 3 and Table 3.3.1.	Design within 6 months, install within 12 months



22	Fire Protection System (ITM)	Inspection, testing and maintenance (ITM) of the standpipe system is not in accordance with NFPA 25.	Inspect, test and maintain the standpipe system and keep written records on-site, in accordance with NFPA 25 and ACCORD standards.	Within 3 months
23	Fire Extinguishers (ITM)	Inspection, testing and maintenance of portable fire extinguishers is not in accordance with NFPA 10.	Inspect, test and maintain the portable fire extinguishers and keep written records onsite, in accordance with NFPA 10 and ACCORD standards.	Within 3 months



24	Egress Lighting	Manual on-off switch facility available for emergency lights/exit signs.	Remove manual on/off switches from emergency lighting units/ exit signs to prevent them from being switched off.	Within 1 month
----	-----------------	--	--	----------------



25	Emergency Lighting (ITM)	Inspection, testing, and maintenance (ITM) for the emergency lighting system were not in accordance with The ACCORD standard.	Inspect, test and maintain the emergency lighting system in the accordance with The ACCORD standard. Keep written records on-site.	Within 3 months
26	Egress Lighting	The directional signs are not provided where there is a change in direction and where the continuation of the egress path is not obvious.	Install illuminated directional sign where there is a change in the direction of the path of travel.	Within 1 month



27	Egress Lighting	Based on the number and location of emergency lights/exit signs observed, adequate illumination levels are not anticipated along egress routes. Location: All through the building.	Test the emergency lighting system on each floor and provide additional emergency fixtures to provide adequate illumination along the means of egress. Provide a minimum illumination of 10 lux at the floor level within exit stairs and exit discharge paths and minimum 2.5 lux along exit access aisles.	Within 3 months
----	-----------------	--	--	-----------------

