

FIRE SAFETY INSPECTION REPORT

**EXECUTIVE HI-FASHIONS LTD.
HOUSE #23 (FLAT #A-1), ROAD #04 BLOCK-F, BANANI,
1213, GAZIPUR**



ACCORD
on Fire and Building Safety in Bangladesh

The logo of the Bangladesh Accord Foundation is a circular emblem. It features a red silhouette of the map of Bangladesh in the center. The words "Bangladesh Accord" are written in a circular path around the top, and "Foundation" is written around the bottom.

March 4, 2014

SUMMARY

Hi-Fashion Composite Textiles Ltd. was surveyed for fire safety on 04-03-2014 by Hughes Associates, Inc. This summary identifies the major deficiencies that were identified during the inspection.

The purpose of this survey was to identify significant fire safety issues and to provide recommendations for remediation based on applicable standards specified by the Accord. The scope of this initial fire safety inspection was limited to the review and identification of major fire safety issues. The inspection did not include identification of minor deficiencies, which will be further addressed as part of follow-up inspections.

Tables 1 - 2 summarizes the major fire safety issues identified during the inspection. Recommendations have been provided to address each issue.

An implementation schedule shall be developed by the factory to remediate each of the findings. The specific timing of improvements, including any requested extensions due to design / installation constraints, shall be submitted to the Accord for approval.

Table 1. Findings And Recommendations - Main Building (Including Knitting Extension on First Floor)

No	Category	Finding	Recommendation	Remediation Timeframe
F-1	Fire Rated Construction	The diesel fuel storage barrels next to the transformer room are not separated by fire-rated construction.	<p>Separate the flammable liquid by a minimum 2-hr fire-rated construction. Seal and/or protected all openings to maintain the required fire separations.</p> <p>Alternately, relocate the diesel fuel barrels to a location at least 30 ft. from all occupiable spaces.</p>	Within 3 months



F-2	Fire Rated Construction	The boiler room connected to the west side of the building is not separated by fire-rated construction due to openings, the non fire-resistant roof, penetrations, and non-rated doors.	Separate the boiler room by a minimum 2-hr fire-rated construction. Seal and/or protected all openings to maintain the required fire separations	Within 3 months
-----	-------------------------	---	--	-----------------



F-3	Fire Rated Construction	The transformer room is not separated by fire-rated construction due to openings, the non-fire resistant roof, penetrations, and non-rated doors.	Separate the transformer room by a minimum 2-hr fire-rated construction. Seal and/or protected all openings to maintain the required fire separations	Within 3 months
-----	-------------------------	---	---	-----------------



F-4	Fire Rated Construction	Areas used for combustible storage on the factory floor on the ground, first and fifth floors are not separated by fire-rated construction.	<p>Provide dedicated storage rooms separated by minimum 1-hr fire-rated construction.</p> <p>Where separate storage rooms are not feasible, provide defined storage areas and limit the storage arrangement as follows:</p> <ul style="list-style-type: none"> -Maximum height of 2.4m and maximum area of 23m² -If sprinkler protected: maximum height of 3.66m and maximum area of 93m² <p>Separate areas of unenclosed combustible storage by a minimum clear distance of 3m.</p>	Within 3 months
-----	-------------------------	---	--	-----------------

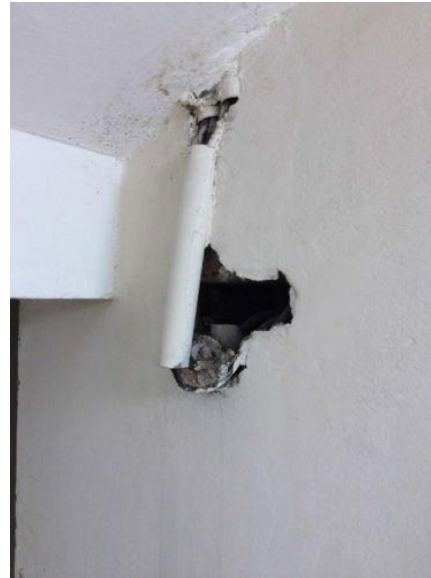




F-5	Fire Rated Construction	The exit stairs are not separated from work areas and other spaces on each floor by fire-rated construction.	Provide minimum 1.5-hr fire rated doors and seal all unprotected openings to separate the exit stairs from work areas and other building spaces on all floor levels. Ensure that the fire doors are self-closing and positive latching and that they are provided with fire exit (panic) hardware where serving production floors. If fire doors are required to be held open for functional reasons, provide automatic-closing devices tied to the fire alarm system.	Within 3 months
-----	-------------------------	--	---	-----------------



F-6	Fire Rated Construction	Unsealed penetrations and openings are located in exit stair enclosures.	Seal all penetrations and openings in exit stair enclosure walls to maintain the fire separation.	Within 3 months
-----	-------------------------	--	---	-----------------



F-7	Fire Rated Construction	Unsealed penetrations and openings are located in the fire-rated floor/ceiling assemblies on the fifth floor.	Provide a minimum 2-hr fire-rated shaft to separate the utility risers from each floor level.	Within 3 months
			Seal all penetrations and openings in floor/ceiling assemblies to maintain the fire separation.	



F-8	Fire Rated Construction	The sub station room at the west stairwell discharge is not separated by fire-rated construction due to non-rated doors.	Separate the sub station room by a minimum 2-hr fire-rated construction. Seal and/or protected all openings to maintain the required fire separations	Within 3 months
-----	-------------------------	--	---	-----------------



F-9	Fire Rated Construction	The ground floor bonded warehouse is not separated by fire-rated construction and discharges to an exit enclosure.	Provide 2-hr fire rated vestibule with 1.5-hr. fire rated door at each entrance discharging to the stairwells. Provide 1-hr. door from vestibule to bonded warehouse.	Within 3 months
-----	-------------------------	--	---	-----------------



F-10	Egress	Egress gates with locking features are provided at building exits, exit stairs, and along egress routes in various locations throughout the building. All gates were open and unlocked during the inspection.	Remove locking features from all egress gates. If locks are required for security reasons, utilize special door locking features complying with NFPA 101.	Immediate
------	--------	---	--	-----------



F-11	Egress	Storage was located in the west exit stair in various locations.	Remove all storage from exit stairs and egress paths.	Immediate
------	--------	--	---	-----------



F-12	Egress	Collapsible gates are provided at building exits, exit stairs, and along egress routes at various locations throughout the building.	Replace all gates along the means of egress with side-hinged, swinging egress doors. If locks are required for security reasons, utilize special door locking features complying with NFPA 101.	Within 1 month
------	--------	--	--	----------------



F-13	Egress	The width of egress aisles on the third floor is less than 36-in.	Provide minimum aisle widths of 36-in.	Within 3 months
------	--------	---	--	-----------------



F-14	Egress	Handrails are not provided at the bottom of the west exit stair.	Provide handrails on at least one side of exit stair.	Within 3 months
------	--------	--	---	-----------------



F-15	Fire Protection	The fire alarm system is antiquated, not a listed system, and does not provide alarm and notification features consistent with acceptable standards.	Replace the fire alarm system with a new, listed addressable fire alarm system in accordance with NFPA 72.	Design within 4 months, install within 9 months
------	-----------------	--	--	---

F-16	Fire Protection Inspection, testing, and maintenance records for the fire alarm system were not available.	Inspect, test and maintain the fire alarm system, and keep written records on-site, in accordance with NFPA 72.	Within 3 months
F-17	Fire Protection When initially observed, the fire alarm panel was alerting in three (3) zones.	Ensure that the fire alarm panel and all interconnected devices are installed correctly in accordance with NFPA 72 and that all electrical circuits are functional.	Within 3 months



F-18	Fire Protection	<p>The building is equipped with single-station smoke alarms. Smoke alarm activation sounds only a local alarm and does not provide automatic fire alarm notification of occupants.</p>	<p>Replace the single-station smoke alarms with automatic smoke detectors tied into the fire alarm system. Configure the fire alarm system to initiate occupant notification upon activation of any two smoke detectors in addition to the manual fire alarm stations.</p>	Within 6 months
		<p>Reportedly the building owner is in the process of having new smoke detectors, that will be tied into the fire panel, installed in the entire building. Currently the first, second, and fifth floors have only one smoke detector tied to the fire alarm on the west side of the floor plate.</p>	<p>In regards to ceiling configuration, install the smoke detectors in accordance with NFPA 72.</p>	



F-19	Egress Lighting	<p>Exit sign not provided at the ground floor exit to the child care room.</p>	<p>Provide exit signs above all exits to the exterior and all doors to the exit stairs.</p>	Within 1 month
------	-----------------	--	---	----------------



F-20	Egress Lighting	Exit signage not illuminated on the ground, first, and fifth floors and in the generator room due to burned out bulbs.	Regularly inspect all exit signage and replace/install lights as needed to illuminate signs.	Within 1 month
------	-----------------	--	--	----------------



F-21	Egress Lighting	Emergency lighting was not functional in various locations throughout the factory because the bulbs were burned out.	Regularly test the emergency lighting system on each floor and replace/repair lights as needed.	Within 1 month
------	-----------------	--	---	----------------



Table 2. Findings And Recommendations - Yarn Godown

No	Category	Finding	Recommendation	Remediation Timeframe
F-1	Fire Rated Construction	The Yarn Godown, an area used for combustible storage, is not separated by fire-rated construction (non fire-rated doors and tin roof construction).	Provide the dedicated storage room separation by minimum 1-hr fire-rated construction.	Within 3 months





F-2	Egress	Storage was located in the egress path of the Yarn Godown.	Keep egress paths and stairs clear of storage.	Immediate
-----	--------	--	--	-----------



F-3	Egress	An egress door with locking features was provided at the building exit to the Yarn Godown. The door was open and unlocked during the inspection.	Remove locking features from all egress doors / gates. If locks are required for security reasons, utilize special door locking features complying with NFPA 101.	Immediate
-----	--------	--	--	-----------

F-4	Egress	A sliding door was provided at the building exit of the Yarn Godown.	Replace all sliding doors along the means of egress with side-hinged, swinging egress doors.	Within 1 month
			If locks are required for security reasons, utilize special door locking features complying with NFPA 101.	



F-5	Fire Protection	The fire alarm system is antiquated, not a listed system, and does not provide alarm and notification features consistent with acceptable standards.	Replace the fire alarm system with a new, listed addressable fire alarm system in accordance with NFPA 72.	Design within 4 months, install within 9 months
-----	-----------------	--	--	---

F-6	Fire Protection	Inspection, testing, and maintenance records for the fire alarm system were not available.	Inspect, test and maintain the fire alarm system, and keep written records on-site, in accordance with NFPA 72.	Within 3 months
-----	-----------------	--	---	-----------------

F-7	Fire Protection	The fire alarm system of the Yarn Godown does not appear to provide adequate audible notification coverage. Currently there are no horn/strobe units provided in the building.	Provide additional notification appliances such that the fire alarm system is audible throughout the building in accordance with NFPA 72.	Within 6 months
F-8	Egress Lighting	Based on the number and location of emergency lights observed in the Yarn Godown, adequate illumination levels are not anticipated along egress routes.	Test the emergency lighting system on each floor and provide additional emergency fixtures to provide adequate illumination along the means of egress. Provide a minimum illumination of 10 lux at the floor level within exit stairs and exit discharge paths and minimum 2.5 lux along exit access aisles.	Within 3 months
