

FIRE SAFETY INSPECTION REPORT

KNIT ASIA LTD
EAST NARSHINGAPUR, BURIPARA, EARPUR,
ASHULIA, DHAKA

OTHER FACTORIES: NONE



ACC  **RD**
on Fire and Building Safety in Bangladesh

June 8, 2014

SUMMARY

Knit Asia Ltd was surveyed for fire safety on 6/8/2014 by Hughes Associates, Inc. This summary identifies the major deficiencies that were identified during the inspection.

The purpose of this survey was to identify significant fire safety issues and to provide recommendations for remediation based on applicable standards specified by the Accord. The scope of this initial fire safety inspection was limited to the review and identification of major fire safety issues. The inspection did not include identification of minor deficiencies, which will be further addressed as part of follow-up inspections.

Table 1 summarizes the major fire safety issues identified during the inspection. Recommendations have been provided to address each issue.

An implementation schedule shall be developed by the factory to remediate each of the findings. The specific timing of improvements, including any requested extensions due to design / installation constraints, shall be submitted to the Accord for approval.

Table 1. Findings And Recommendations

No.	Category	Finding	Recommendation	Remediation Timeframe
F-1	Fire Rated Construction	Areas used for storage on the ground floors warehouse is not separated by fire rated construction. These areas were found i the basement, ground floor, 4, and 5 floors.	<p>Provide dedicated storage rooms separated by minimum 1-hr fire-rated construction.</p> <p>Where separate storage rooms are not feasible, provide defined storage areas and limit the storage arrangement as follows:</p> <ul style="list-style-type: none"> - Maximum height of 2.4m and maximum area of 23m² - If sprinkler protected: maximum height of 3.66m and maximum area of 93m² <p>Separate areas of unenclosed combustible storage by a minimum clear distance of 3m.</p>	Within 3 months

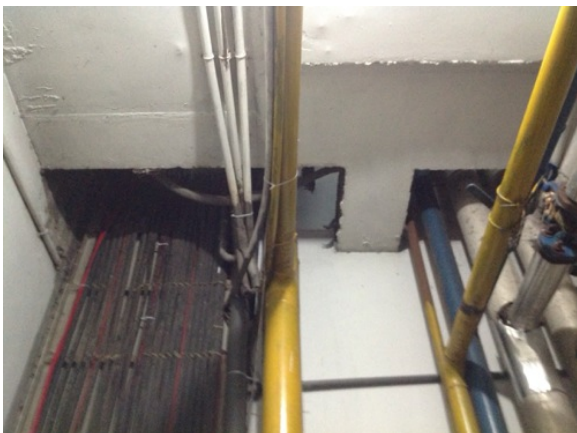




F-2	Fire Rated Construction	Exit stairs is not separated from work areas, other spaces on each floor by fire-rated construction.	Provide minimum 1.5-hr fire rated doors and seal all unprotected openings to separate the exit stairs from work areas and other building spaces on all floor levels. Ensure that the fire doors are self-closing and positive latching and that they are provided with fire exit (panic) hardware where serving production floors.	Within 3 months
			If fire doors are required to be held open for functional reasons, provide automatic-closing devices tied to the fire alarm system.	



F-3	Fire Rated Construction	Unsealed penetrations and openings are located in the fire-rated floor/ceiling assemblies of the IPS room.	Provide a minimum 2-hr fire-rated shaft to separate the utility risers from each floor level.	Within 3 months
			Seal all penetrations and openings in floor/ceiling assemblies to maintain the fire separation.	



F-4	Egress	Egress doors and gates with locking features are provided at building exits, exit stairs, along egress routes, exit discharge. These locking features can be found on all exits.	Remove locking features from all egress doors / gates. If locks are required for security reasons, utilize special door locking features complying with NFPA 101.	Immediate
-----	--------	--	--	-----------



F-5	Egress	Storage was located in the egress path on floors 7 and 3 along the north and northwest and center egress paths.	Keep egress paths and stairs clear of storage.	Immediate
-----	--------	---	--	-----------



F-6 Egress

Storage was located in the exit stair of the north exit stairwell on floors 2,3,4,and th basement.

Remove all storage from exit stairs and egress paths.

Immediate



F-7	Egress	Exit capacity is not adequate for the occupant load. On floor 8 the exit capacity is 684 and the occupant load is 700.	Reduce occupant load to not more than available exit capacity Of 684.	Immediate
-----	--------	--	---	-----------

F-8	Egress	Collapsible gates are provided at building exit discharge on all discharges on the ground floor.	<p>Replace all gates and sliding doors along the means of egress with side-hinged, swinging egress doors.</p> <p>If locks are required for security reasons, utilize special door locking features complying with NFPA 101.</p>	Within 1 month
-----	--------	--	---	----------------



F-9	Egress	Exit stair door serving 50 or more occupants does not swing in the direction of egress travel on floor 8 east and west exit stairwells.	Modify the egress door to swing in the direction of egress travel.	Within 3 months
-----	--------	---	--	-----------------



F-10	Egress	The width of egress aisles is less than 36-in. on floor 7 and 3 along the northwest and center egress paths.	Provide minimum aisle widths of 36-in.	Within 3 months
------	--------	--	--	-----------------



F-11	Fire Protection	The high-rise building has an occupied floor greater than 23m (75 ft) and is not provided with automatic sprinkler protection. The large occupant loads, heavy fuel loading, and anticipated extended egress times warrant sprinkler protection.	Provide automatic sprinkler protection throughout the building in accordance with NFPA 13.	Design within 6 months, install within 12 months
F-12	Fire Protection	Inspection, testing, and maintenance of the fire alarm system is not in accordance with NFPA 72.	Inspect, test and maintain the fire alarm system, and keep written records on-site, in accordance with NFPA 72.	Within 3 months
F-13	Egress Lighting	Inspection, testing, and maintenance for the emergency lighting system was not in accordance with The ACCORD standard.	Inspect, test and maintain the emergency lighting system in accordance with The ACCORD standard. Keep written records on-site.	Within 3 months