

# **FIRE SAFETY INSPECTION REPORT**

**MEGA YARN DYEING MILLS LTD  
SHARDAGONJ, GABINDOPUR, JAIDEBPUR**

**OTHER FACTORIES: NONE**



**ACCORD**  
on Fire and Building Safety in Bangladesh



August 28, 2014

## **SUMMARY**

**Mega Yarn Dyeing Mills Ltd was surveyed for fire safety on 8/28/2014 by Hughes Associates, Inc. This summary identifies the major deficiencies that were identified during the inspection.**

**The purpose of this survey was to identify significant fire safety issues and to provide recommendations for remediation based on applicable standards specified by the Accord. The scope of this initial fire safety inspection was limited to the review and identification of major fire safety issues. The inspection did not include identification of minor deficiencies, which will be further addressed as part of follow-up inspections.**

**Tables 1 - 6 summarizes the major fire safety issues identified during the inspection. Recommendations have been provided to address each issue.**

**An implementation schedule shall be developed by the factory to remediate each of the findings. The specific timing of improvements, including any requested extensions due to design / installation constraints, shall be submitted to the Accord for approval.**

**Table 1. Findings And Recommendations - Building 02**

No.	Category	Finding	Recommendation	Remediation Timeframe
F-1	Fire Rated Construction	The boiler, generator and transformer room are not separated by fire-rated construction that is openings, non-rated doors and penetrations on ground floor building 02.	Separate the boiler, generator and transformer room by a minimum 2-hr fire-rated construction. Seal and/or protected all openings to maintain the required fire separations	Within 3 months





---

F-2	Fire Rated Construction	Areas used for combustible storage are not separated by fire-rated construction on all floors.	<p>Provide dedicated storage rooms separated by minimum 1-hr fire-rated construction.</p> <p>Where separate storage rooms are not feasible, provide defined storage areas and limit the storage arrangement as follows:</p> <ul style="list-style-type: none"><li>- Maximum height of 2.4m and maximum area of 23m<sup>2</sup></li><li>- If sprinkler protected: maximum height of 3.66m and maximum area of 93m<sup>2</sup></li></ul> <p>Separate areas of unenclosed combustible storage by a minimum clear distance of 3m.</p>	Within 3 months
-----	-------------------------	--	---	-----------------



---

F-3	Fire Rated Construction	The exit stairs are not separated from work areas and other spaces on each floor by fire-rated construction.	Provide minimum 1.5-hr fire rated doors and seal all unprotected openings to separate the exit stairs from work areas and other building spaces on all floor levels. Ensure that the fire doors are self-closing and positive latching and that they are provided with fire exit (panic) hardware where serving production floors.  If fire doors are required to be held open for functional reasons, provide automatic-closing devices tied to the fire alarm system.	Within 3 months
-----	-------------------------	--	---	-----------------



---

F-4	Fire Rated Construction	Unsealed penetrations and openings are located in exit stair enclosures.	Seal all penetrations and openings in exit stair enclosure walls to maintain the fire separation.	Within 3 months
-----	-------------------------	--	---	-----------------



---

F-5	Fire Rated Construction	Rooms used for combustible storage are not separated by fire-rated construction on all floors.	Provide dedicated storage rooms separated by minimum 1-hr fire-rated construction.	Within 3 months
-----	-------------------------	--	--	-----------------



F-6	Egress	Egress doors / gates with locking features are provided at building exits and exit stairs. All gates/doors were open and unlocked during the inspection.	Remove locking features from all egress doors / gates.  If locks are required for security reasons, utilize special door locking features complying with NFPA 101.	Immediate
-----	--------	--	--	-----------



F-7 Egress

Storage was located in the egress path on ground and 1st floors.

Keep egress paths and stairs clear of storage.

Immediate





---

F-8	Egress	Storage was located in the exit stair on ground floor.	Remove all storage from exit stairs and egress paths.	Immediate
-----	--------	--	---	-----------



---

F-9	Egress	Collapsible gates / sliding doors are provided at building exits, exit stairs and exit discharge on all floors.	Replace all gates / sliding doors along the means of egress with side-hinged, swinging egress doors.  If locks are required for security reasons, utilize special door locking features complying with NFPA 101.	Within 1 month
-----	--------	---	--	----------------



---

F-10	Egress	The width of egress aisles is less than 36-in. on 1st floor.	Provide minimum aisle widths of 36-in.	Within 3 months
------	--------	--	--	-----------------



---

F-11	Fire Protection	The fire alarm system is antiquated, not a listed system, and does not provide alarm and notification features consistent with acceptable standards.	Replace the fire alarm system with a new, listed addressable fire alarm system in accordance with NFPA 72.	Design within 4 months, install within 9 months
------	-----------------	--	--	---



---

F-12	Fire Protection	Inspection, testing, and maintenance of the fire alarm system is not in accordance with NFPA 72.	Inspect, test and maintain the fire alarm system, and keep written records on-site, in accordance with NFPA 72.	Within 3 months
------	-----------------	--	---	-----------------

F-13	Fire Protection	The building is equipped with single-station smoke alarms. Smoke alarm activation sounds only a local alarm and does not provide automatic fire alarm notification of occupants.	Remove single-station smoke alarms. Provide automatic smoke detection throughout the building, tied into the fire alarm system, in accordance with NFPA 72.	Within 6 months
------	-----------------	--	---	-----------------



F-14	Egress Lighting	Exit sign not provided at exit path leading to exit doors.	Provide exit signs above all exits to the exterior and all doors to the exit stairs.	Within 1 month
------	-----------------	--	--	----------------

F-15	Egress Lighting	Exit signage not illuminated burned out, or broken in some location of factory floor on all floors.	Regularly inspect all exit signage and replace/install lights as needed to illuminate signs.	Within 1 month
------	-----------------	---	--	----------------

F-16	Egress Lighting	Emergency lighting did not function in test mode burned out or broken in some locations of factory floor on all floors.	Regularly test the emergency lighting system on each floor and replace/repair lights as needed.	Within 1 month
F-17	Egress Lighting	Inspection, testing, and maintenance for the emergency lighting system was not in accordance with The ACCORD standard.	Inspect, test and maintain the emergency lighting system in accordance with The ACCORD standard. Keep written records on-site.	Within 3 months
F-18	Egress Lighting	Based on the number and location of emergency lights observed, adequate illumination levels are not anticipated along egress routes on ground and 1st floors.	Test the emergency lighting system on each floor and provide additional emergency fixtures to provide adequate illumination along the means of egress. Provide a minimum illumination of 10 lux at the floor level within exit stairs and exit discharge paths and minimum 2.5 lux along exit access aisles.	Within 3 months

**Table 2. Findings And Recommendations - Building 03**

No.	Category	Finding	Recommendation	Remediation Timeframe
F-1	Fire Rated Construction	Areas used for combustible storage are not separated by fire-rated construction on ground, 1st, 2nd, 3rd, 4th and 5th floors.	<p>Provide dedicated storage rooms separated by minimum 1-hr fire-rated construction.</p> <p>Where separate storage rooms are not feasible, provide defined storage areas and limit the storage arrangement as follows:</p> <ul style="list-style-type: none"> <li>- Maximum height of 2.4m and maximum area of 23m<sup>2</sup></li> <li>- If sprinkler protected: maximum height of 3.66m and maximum area of 93m<sup>2</sup></li> </ul> <p>Separate areas of unenclosed combustible storage by a minimum clear distance of 3m.</p>	Within 3 months





---

F-2	Fire Rated Construction	The exit stairs are not separated from work areas and other spaces on each floor by fire-rated construction.	Provide minimum 1.5-hr fire rated doors and seal all unprotected openings to separate the exit stairs from work areas and other building spaces on all floor levels. Ensure that the fire doors are self-closing and positive latching and that they are provided with fire exit (panic) hardware where serving production floors.	Within 3 months
			If fire doors are required to be held open for functional reasons, provide automatic-closing devices tied to the fire alarm system.	



---

F-3	Fire Rated Construction	Unsealed penetrations and openings are located in exit stair enclosures.	Seal all penetrations and openings in exit stair enclosure walls to maintain the fire separation.	Within 3 months
-----	-------------------------	--	---	-----------------



---

F-4	Fire Rated Construction	Rooms used for combustible storage are not separated by fire-rated construction on ground, 1st, 2nd, 3rd, 4th and 5th floors.	Provide dedicated storage rooms separated by minimum 1-hr fire-rated construction.	Within 3 months
-----	-------------------------	---	--	-----------------



F-5 Egress

Egress doors / gates with locking features are provided at building exits, exit stairs, and exit discharge on all floors. All gates/doors were open and unlocked during the inspection.

Remove locking features from all egress doors / gates. If locks are required for security reasons, utilize special door locking features complying with NFPA 101.

Immediate





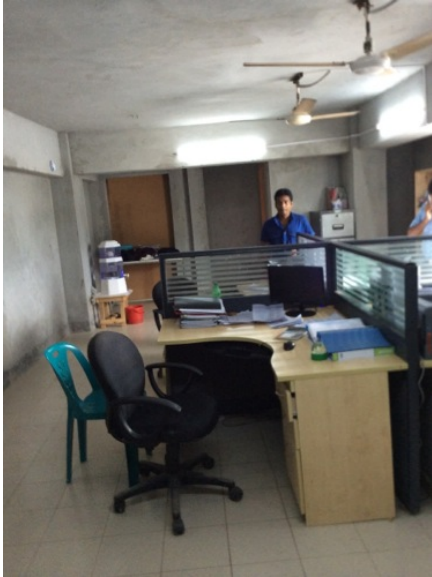
F-6 Egress

Storage was located in the egress path on ground, 1st, 2nd, 3rd, 4th and 5th floors

Keep egress paths and stairs clear of storage.

Immediate





---

F-7	Egress	Storage was located in the exit stairs on ground and 7th floors.	Remove all storage from exit stairs and egress paths.	Immediate
-----	--------	--	---	-----------





F-8 Egress

Collapsible gates / sliding doors are provided at building exits, exit stairs and exit discharge on all floors.

Replace all gates / sliding doors along the means of egress with side-hinged, swinging egress doors.

Within 1 month

If locks are required for security reasons, utilize special door locking features complying with NFPA 101.





---

F-9	Egress	The width of egress aisles is less than 36-in. on 1st, 2nd, 3rd, 4th, 5th and 6th floors.	Provide minimum aisle widths of 36-in.	Within 3 months
-----	--------	---	--	-----------------



---

F-10	Egress	The exits are not remotely located from each other such that a single fire event could compromise both exits on 1st floor.	Modify exit arrangement.	Within 6 months
------	--------	--	--------------------------	-----------------



---

F-11	Fire Protection	The fire alarm system is antiquated, not a listed system, and does not provide alarm and notification features consistent with acceptable standards.	Replace the fire alarm system with a new, listed addressable fire alarm system in accordance with NFPA 72.	Design within 4 months, install within 9 months
------	-----------------	--	--	---



F-12	Fire Protection	The high-rise building has an occupied floor greater than 23m (75 ft) and is not provided with automatic sprinkler protection. The large occupant loads, heavy fuel loading, and anticipated extended egress times warrant sprinkler protection.	Provide automatic sprinkler protection throughout the building in accordance with NFPA 13.	Design within 6 months, install within 12 months
F-13	Fire Protection	Inspection, testing, and maintenance of the fire alarm system is not in accordance with NFPA 72.	Inspect, test and maintain the fire alarm system, and keep written records on-site, in accordance with NFPA 72.	Within 3 months
F-14	Fire Protection	The building is equipped with single-station smoke alarms. Smoke alarm activation sounds only a local alarm and does not provide automatic fire alarm notification of occupants.	Remove single-station smoke alarms. Provide automatic smoke detection throughout the building, tied into the fire alarm system, in accordance with NFPA 72.	Within 6 months



F-15	Egress Lighting	Exit sign not provided at exit path leading to exit door on all floors.	Provide exit signs above all exits to the exterior and all doors to the exit stairs.	Within 1 month
F-16	Egress Lighting	Exit signage not illuminated burned out or broken in some locations on factory floors.	Regularly inspect all exit signage and replace/install lights as needed to illuminate signs.	Within 1 month
F-17	Egress Lighting	Emergency lighting did not function in test mode burned out or broken in some locations on all floors.	Regularly test the emergency lighting system on each floor and replace/repair lights as needed.	Within 1 month
F-18	Egress Lighting	Inspection, testing, and maintenance for the emergency lighting system was not in accordance with The ACCORD standard.	Inspect, test and maintain the emergency lighting system in accordance with The ACCORD standard. Keep written records on-site.	Within 3 months
F-19	Egress Lighting	Based on the number and location of emergency lights observed, adequate illumination levels are not anticipated along egress routes on all floors.	Test the emergency lighting system on each floor and provide additional emergency fixtures to provide adequate illumination along the means of egress. Provide a minimum illumination of 10 lux at the floor level within exit stairs and exit discharge paths and minimum 2.5 lux along exit access aisles.	Within 3 months

**Table 3. Findings And Recommendations - Building 04**

No.	Category	Finding	Recommendation	Remediation Timeframe
F-1	Fire Rated Construction	Rooms used for combustible storage are not separated by fire-rated construction ground, 2nd, 3rd and 4th floors.	Provide dedicated storage rooms separated by minimum 1-hr fire-rated construction.	Within 3 months





F-2	Fire Rated Construction	The exit stairs are not separated from work areas and other spaces on each floor by fire-rated construction.	<p>Provide minimum 1.5-hr fire rated doors and seal all unprotected openings to separate the exit stairs from work areas and other building spaces on all floor levels. Ensure that the fire doors are self-closing and positive latching and that they are provided with fire exit (panic) hardware where serving production floors.</p> <p>If fire doors are required to be held open for functional reasons, provide automatic-closing devices tied to the fire alarm system.</p>	Within 3 months
-----	-------------------------	--	--	-----------------



---

F-3	Fire Rated Construction	Unsealed penetrations and openings are located in exit stair enclosures.	Seal all penetrations and openings in exit stair enclosure walls to maintain the fire separation.	Within 3 months
-----	-------------------------	--	---	-----------------



F-4	Fire Rated Construction	Areas used for combustible storage are not separated by fire-rated construction on 1st, 5th, 6th, 7th and 8th floors.	<p>Provide dedicated storage rooms separated by minimum 1-hr fire-rated construction.</p> <p>Where separate storage rooms are not feasible, provide defined storage areas and limit the storage arrangement as follows:</p> <ul style="list-style-type: none"><li>- Maximum height of 2.4m and maximum area of 23m<sup>2</sup></li><li>- If sprinkler protected: maximum height of 3.66m and maximum area of 93m<sup>2</sup></li></ul> <p>Separate areas of unenclosed combustible storage by a minimum clear distance of 3m.</p>	Within 3 months
-----	-------------------------	---	---	-----------------





F-5 Egress

Egress doors / gates with locking features are provided at building exits, exit stairs, along egress routes and exit discharge. All gates/doors were open and unlocked during the inspection.

Remove locking features from all egress doors / gates.

If locks are required for security reasons, utilize special door locking features complying with NFPA 101.

Immediate





---

F-6	Egress	Storage was located in the egress path on 1st, 5th, 6th, 7th and 8th floors.	Keep egress paths and stairs clear of storage.	Immediate
-----	--------	--	--	-----------





---

F-7	Egress	Storage was located in the exit stair on ground floor.	Remove all storage from exit stairs and egress paths.	Immediate
-----	--------	--	---	-----------



---

F-8	Egress	Non fire rated fire doors and glass swing doors are provided at building exits, exit stairs, along egress routes and exit discharge on all floors	Replace all gates / sliding doors along the means of egress with side-hinged, swinging egress doors.  If locks are required for security reasons, utilize special door locking features complying with NFPA 101.	Within 1 month
-----	--------	---	--	----------------



---

F-9	Egress	The width of egress aisles is less than 36-in. on 1st, 5th, 6th, 7th and 8th floors.	Provide minimum aisle widths of 36-in.	Within 3 months
-----	--------	--	--	-----------------



---

F-10	Fire Protection	The fire alarm system is antiquated, not a listed system, and does not provide alarm and notification features consistent with acceptable standards.	Replace the fire alarm system with a new, listed addressable fire alarm system in accordance with NFPA 72.	Design within 4 months, install within 9 months
------	-----------------	--	--	---



---

F-11	Fire Protection	The high-rise building has an occupied floor greater than 23m (75 ft) and is not provided with automatic sprinkler protection. The large occupant loads, heavy fuel loading, and anticipated extended egress times warrant sprinkler protection.	Provide automatic sprinkler protection throughout the building in accordance with NFPA 13.	Design within 6 months, install within 12 months
------	-----------------	--	--	--

F-12	Fire Protection	Inspection, testing, and maintenance of the fire alarm system is not in accordance with NFPA 72.	Inspect, test and maintain the fire alarm system, and keep written records on-site, in accordance with NFPA 72.	Within 3 months
F-13	Fire Protection	The building is equipped with single-station smoke alarms. Smoke alarm activation sounds only a local alarm and does not provide automatic fire alarm notification of occupants.	Remove single-station smoke alarms. Provide automatic smoke detection throughout the building, tied into the fire alarm system, in accordance with NFPA 72.	Within 6 months



F-14	Egress Lighting	Exit sign not provided at exit path leading to exit door.	Provide exit signs above all exits to the exterior and all doors to the exit stairs.	Within 1 month
F-15	Egress Lighting	Exit signage not illuminated burned out or broken in some locations on all floors.	Regularly inspect all exit signage and replace/install lights as needed to illuminate signs.	Within 1 month

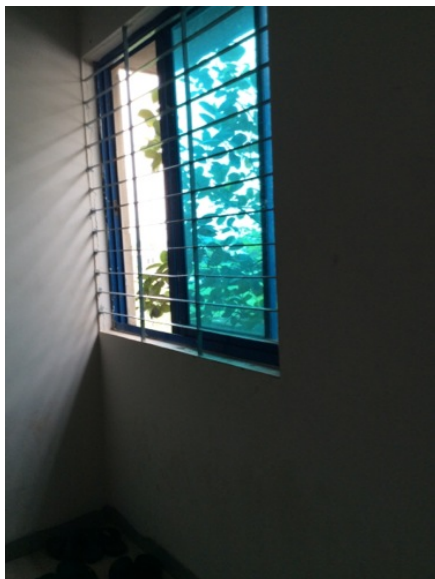
F-16	Egress Lighting	Emergency lighting did not function in test mode burned out or broken in some location on all floors.	Regularly test the emergency lighting system on each floor and replace/repair lights as needed.	Within 1 month
F-17	Egress Lighting	Inspection, testing, and maintenance for the emergency lighting system was not in accordance with The ACCORD standard.	Inspect, test and maintain the emergency lighting system in accordance with The ACCORD standard. Keep written records on-site.	Within 3 months
F-18	Egress Lighting	Based on the number and location of emergency lights observed, adequate illumination levels are not anticipated along egress routes on all floors.	Test the emergency lighting system on each floor and provide additional emergency fixtures to provide adequate illumination along the means of egress. Provide a minimum illumination of 10 lux at the floor level within exit stairs and exit discharge paths and minimum 2.5 lux along exit access aisles.	Within 3 months

**Table 4. Findings And Recommendations - Building 09**

No.	Category	Finding	Recommendation	Remediation Timeframe
F-1	Fire Rated Construction	The exit stairs are not separated from work areas and other spaces on each floor by fire-rated construction.	<p>Provide minimum 1.5-hr fire rated doors and seal all unprotected openings to separate the exit stairs from work areas and other building spaces on all floor levels. Ensure that the fire doors are self-closing and positive latching and that they are provided with fire exit (panic) hardware where serving production floors.</p> <p>If fire doors are required to be held open for functional reasons, provide automatic-closing devices tied to the fire alarm system.</p>	Within 3 months



F-2	Fire Rated Construction	Unsealed penetrations and openings are located in exit stair enclosures.	Seal all penetrations and openings in exit stair enclosure walls to maintain the fire separation.	Within 3 months
-----	-------------------------	--	---	-----------------



F-3	Fire Rated Construction	Areas used for combustible storage are not separated by fire-rated construction on ground floor.	<p>Provide dedicated storage rooms separated by minimum 1-hr fire-rated construction.</p> <p>Where separate storage rooms are not feasible, provide defined storage areas and limit the storage arrangement as follows:</p> <ul style="list-style-type: none"> <li>- Maximum height of 2.4m and maximum area of 23m<sup>2</sup></li> <li>- If sprinkler protected: maximum height of 3.66m and maximum area of 93m<sup>2</sup></li> </ul> <p>Separate areas of unenclosed combustible storage by a minimum clear distance of 3m.</p>	Within 3 months
-----	-------------------------	--	--	-----------------



---

F-4	Egress	Egress doors / gates with locking features are provided at exit stairs and exit discharge on all floors. All gates/doors were open and unlocked during the inspection.	Remove locking features from all egress doors / gates.  If locks are required for security reasons, utilize special door locking features complying with NFPA 101.	Immediate
-----	--------	--	--	-----------



---

F-5	Egress	Storage was located in the egress path on ground floor.	Keep egress paths and stairs clear of storage.	Immediate
-----	--------	---	--	-----------



---

F-6	Egress	Storage was located in the exit stair on ground floor.	Remove all storage from exit stairs and egress paths.	Immediate
-----	--------	--	---	-----------



---

F-7	Egress	Collapsible gates / sliding doors are provided at exit stairs and exit discharge on all floors.	Replace all gates / sliding doors along the means of egress with side-hinged, swinging egress doors.  If locks are required for security reasons, utilize special door locking features complying with NFPA 101.	Within 1 month
-----	--------	---	--	----------------



---

F-8	Fire Protection	The fire alarm system is antiquated, not a listed system, and does not provide alarm and notification features consistent with acceptable standards.	Replace the fire alarm system with a new, listed addressable fire alarm system in accordance with NFPA 72.	Design within 4 months, install within 9 months
-----	-----------------	--	--	---



F-9	Fire Protection	Inspection, testing, and maintenance of the fire alarm system is not in accordance with NFPA 72.	Inspect, test and maintain the fire alarm system, and keep written records on-site, in accordance with NFPA 72.	Within 3 months
F-10	Fire Protection	The building is equipped with single-station smoke alarms. Smoke alarm activation sounds only a local alarm and does not provide automatic fire alarm notification of occupants.	Remove single-station smoke alarms. Provide automatic smoke detection throughout the building, tied into the fire alarm system, in accordance with NFPA 72.	Within 6 months



---

F-11	Egress Lighting	Inspection, testing, and maintenance for the emergency lighting system was not in accordance with The ACCORD standard.	Inspect, test and maintain the emergency lighting system in accordance with The ACCORD standard. Keep written records on-site.	Within 3 months
------	-----------------	--	--	-----------------

**Table 5. Findings And Recommendations - Building 01**

No.	Category	Finding	Recommendation	Remediation Timeframe
F-1	Fire Rated Construction	Rooms used for combustible storage are not separated by fire-rated construction ground floor	Provide dedicated storage rooms separated by minimum 1-hr fire-rated construction.	Within 3 months



F-2	Fire Rated Construction	Areas used for combustible storage are not separated by fire-rated construction on ground floor.	<p>Provide dedicated storage rooms separated by minimum 1-hr fire-rated construction.</p> <p>Where separate storage rooms are not feasible, provide defined storage areas and limit the storage arrangement as follows:</p> <ul style="list-style-type: none"> <li>- Maximum height of 2.4m and maximum area of 23m<sup>2</sup></li> <li>- If sprinkler protected: maximum height of 3.66m and maximum area of 93m<sup>2</sup></li> </ul> <p>Separate areas of unenclosed combustible storage by a minimum clear distance of 3m.</p>	Within 3 months
-----	-------------------------	--	--	-----------------

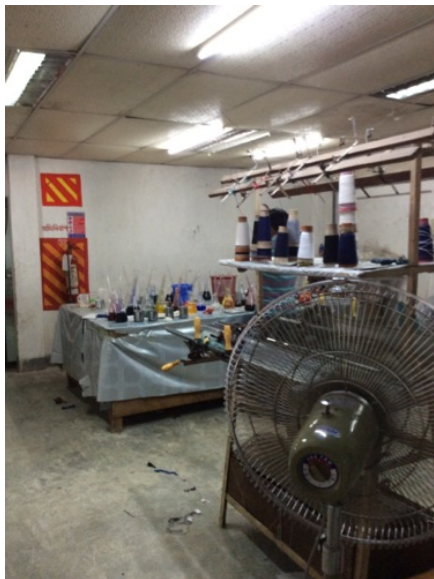


F-3	Egress	Egress doors / gates with locking features are provided at building exits, along egress routes and exit discharge. All gates/doors were open and unlocked during the inspection.	<p>Remove locking features from all egress doors / gates.</p> <p>If locks are required for security reasons, utilize special door locking features complying with NFPA 101.</p>	Immediate
-----	--------	--	---	-----------



---

F-4	Egress	Storage was located in the egress path on ground floor.	Keep egress paths and stairs clear of storage.	Immediate
-----	--------	---	--	-----------



---

F-5	Egress	The width of egress aisles is less than 36-in. on ground floor.	Provide minimum aisle widths of 36-in.	Within 3 months
-----	--------	---	--	-----------------



---

F-6	Fire Protection	The fire alarm system is antiquated, not a listed system, and does not provide alarm and notification features consistent with acceptable standards.	Replace the fire alarm system with a new, listed addressable fire alarm system in accordance with NFPA 72.	Design within 4 months, install within 9 months
-----	-----------------	--	--	---



---

F-7	Fire Protection	Inspection, testing, and maintenance of the fire alarm system is not in accordance with NFPA 72.	Inspect, test and maintain the fire alarm system, and keep written records on-site, in accordance with NFPA 72.	Within 3 months
-----	-----------------	--	---	-----------------

---

F-8	Egress Lighting	Inspection, testing, and maintenance for the emergency lighting system was not in accordance with The ACCORD standard.	Inspect, test and maintain the emergency lighting system in accordance with The ACCORD standard. Keep written records on-site.	Within 3 months
F-9	Egress Lighting	Based on the number and location of emergency lights observed, adequate illumination levels are not anticipated along egress routes on ground floor.	Test the emergency lighting system on each floor and provide additional emergency fixtures to provide adequate illumination along the means of egress. Provide a minimum illumination of 10 lux at the floor level within exit stairs and exit discharge paths and minimum 2.5 lux along exit access aisles.	Within 3 months

---

**Table 6. Findings And Recommendations - Building 05**

No.	Category	Finding	Recommendation	Remediation Timeframe
F-1	Fire Rated Construction	Areas used for combustible storage are not separated by fire- rated construction on ground floor	<p>Provide dedicated storage rooms separated by minimum 1-hr fire-rated construction.</p> <p>Where separate storage rooms are not feasible, provide defined storage areas and limit the storage arrangement as follows:</p> <ul style="list-style-type: none"> <li>- Maximum height of 2.4m and maximum area of 23m<sup>2</sup></li> <li>- If sprinkler protected: maximum height of 3.66m and maximum area of 93m<sup>2</sup></li> </ul> <p>Separate areas of unenclosed combustible storage by a minimum clear distance of 3m.</p>	Within 3 months



F-2	Fire Rated Construction	Hazardous materials storage area is not separated by fire-rated construction that is openings, non-rated doors, penetrations on mezzanine floors.	Separate the hazardous materials storage room by a minimum 2-hr fire-rated construction. Seal and/or protected all openings to maintain the required fire separations.	Within 3 months
-----	-------------------------	---	--	-----------------



---

F-3	Fire Rated Construction	Rooms used for combustible storage are not separated by fire-rated construction on ground floor.	Provide dedicated storage rooms separated by minimum 1-hr fire-rated construction.	Within 3 months
-----	-------------------------	--	--	-----------------



---

F-4	Egress	Egress doors / gates with locking features are provided at building exits, along egress routes and exit discharge. All gates/doors were open and unlocked during the inspection.	Remove locking features from all egress doors / gates.  If locks are required for security reasons, utilize special door locking features complying with NFPA 101.	Immediate
-----	--------	--	--	-----------



---

F-5	Egress	Storage was located in the egress path on ground floor.	Keep egress paths and stairs clear of storage.	Immediate
-----	--------	---	--	-----------



---

F-6	Egress	The width of egress aisles is less than 36-in. on ground floor.	Provide minimum aisle widths of 36-in.	Within 3 months
-----	--------	---	--	-----------------



---

F-7	Fire Protection	The fire alarm system is antiquated, not a listed system, and does not provide alarm and notification features consistent with acceptable standards.	Replace the fire alarm system with a new, listed addressable fire alarm system in accordance with NFPA 72.	Design within 4 months, install within 9 months
-----	-----------------	--	--	---



---

F-8	Fire Protection	Inspection, testing, and maintenance of the fire alarm system is not in accordance with NFPA 72.	Inspect, test and maintain the fire alarm system, and keep written records on-site, in accordance with NFPA 72.	Within 3 months
-----	-----------------	--	---	-----------------

---

F-9	Egress Lighting	Inspection, testing, and maintenance for the emergency lighting system was not in accordance with The ACCORD standard.	Inspect, test and maintain the emergency lighting system in accordance with The ACCORD standard. Keep written records on-site.	Within 3 months
F-10	Egress Lighting	Based on the number and location of emergency lights observed, adequate illumination levels are not anticipated along egress routes on ground floor.	Test the emergency lighting system on each floor and provide additional emergency fixtures to provide adequate illumination along the means of egress. Provide a minimum illumination of 10 lux at the floor level within exit stairs and exit discharge paths and minimum 2.5 lux along exit access aisles.	Within 3 months

---