

Norban Comtex Ltd (10050)

Mouza-Sarabo, Chakroborty, Kasimpur Union, Gazipur
(+23.975960N, +90.265450E)

20.APRIL.2014



ACCORD
on Fire and Building Safety in Bangladesh



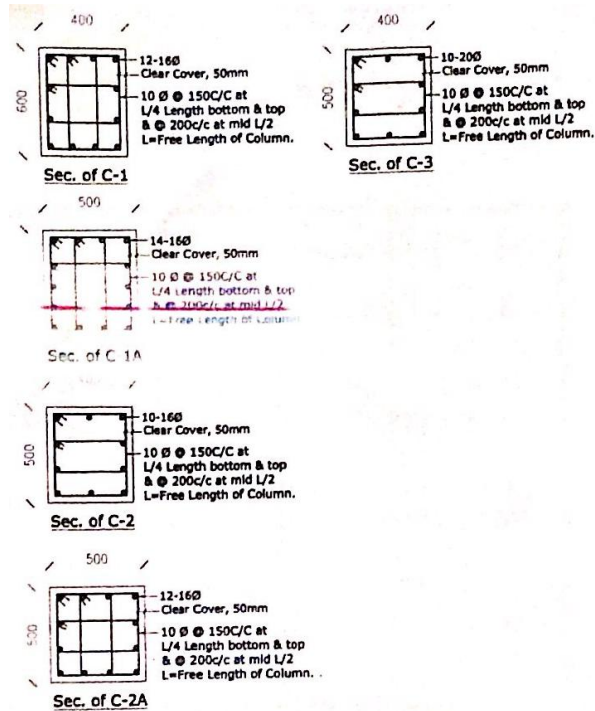
Identified Priority 1 Concerns

(None)

Identified Priority 2 Concerns

- Low Column Safety Factors in Services Building & Garment Pump house
- Poorly Framed Steel Sheds

Priority 2 Concern



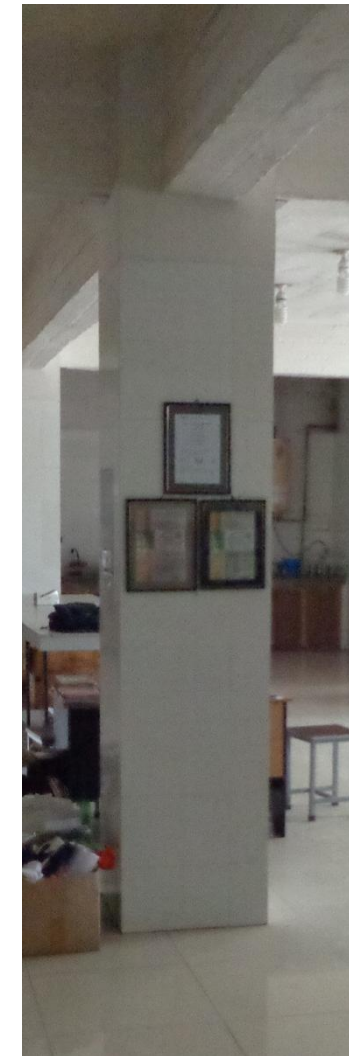
Footing Schedule:

Type	No.	Size (X x Y)	Type	Reinforcement pattern A x B
			T	
F-1	10	2500 X 2500	450	16Ø @ 175 C/C
F-2	20	3000 X 3000	450	16Ø @ 140 C/C
F-3	28	3300 X 3300	550	20Ø @ 175 C/C
F-4	04	3600 X 3600	600	20Ø @ 160 C/C

Column Schedule:

Type	No.	Size of column	Main Bar	Stirrup
C-1	21	400 X 600	12-16Ø	10 Ø @ 150C/C at L/4 Length bottom & top & @ 200c/c at mid L/2 L=Free Length of Column.
C-1A	03	500 X 600	12-16Ø	
C-2	10	400 X 500	12-16Ø	
C-2A	02	500 X 500	12-16Ø	
C-3	42	400 X 500	10-20Ø	

Within the Services Building and the Garment Pump house column load run-downs indicate higher than desirable levels of stress.



High Column Stresses

Priority 2 Concern



The factory complex contained an abundance of sheds, many of which were poorly framed and of very light steel sections.

Poorly Framed Steel Shades

Identified Priority 3 Concerns

(None)

Overall Stability System

All R.C. buildings were constructed with beam/slab arrangements with no obvious means of lateral stability. Steel structures were noted to have at least a degree of steel cross-bracing.



Lateral Restraint System

Water Ingress at Roof Level



There was no waterproofing observed at the rooftop levels of concrete topped buildings

There was no evidence of water infiltration at the underside of roof slabs



Roof Waterproofing System

Priority Actions

Problems Observed Summary

ITEM 1: (Priority 2) Column load run-downs for the Services Building and the Garment Pump house building indicate lower than desirable safety factors.

ITEM 2: (Priority 2) Numerous steel sheds around the factory complex display poor framing practices and are composed of very light steel sections.

Item 1 and actions

High Column Stresses.

Priority 1 (Immediate – Now)

- Remove storage loads from all floors above basement level.

Priority 2 (within 6 weeks)

- Factory Engineer to review design loads and column stresses in both the Services Building and the Garment Pump house Building. Additionally, the Factory Engineer is to conduct a thorough review of the as-built Garment Pump house structure.

Priority 3 (within 6 months)

- Formulate, implement and actively monitor a slab loading plan for all floor plates within the factory.

Item 2 and actions

Poorly Framed Steel Sheds .

Priority 1 (Immediate – Now)

- None

Priority 2 (within 6 weeks)

- Factory Engineer to conduct a review of all steel shade framing giving consideration to wind uplift loading.

Priority 3 (within 6 months)

- Implement any works found necessary by Engineer's review.