

# **FIRE SAFETY INSPECTION REPORT**

**ISLAM KNIT DESIGNS LTD**

**ZARUN, KONABARI, GAZIPUR SADAR, GAZIPUR**

**OTHER FACTORIES: ISLAM GARMENTS LTD UNIT 2**



**ACCORD**  
on Fire and Building Safety in Bangladesh

August 24, 2014

## **SUMMARY**

**Islam Knit Designs Ltd was surveyed for fire safety on 8/24/2014 by Hughes Associates, Inc. This summary identifies the major deficiencies that were identified during the inspection.**

**The purpose of this survey was to identify significant fire safety issues and to provide recommendations for remediation based on applicable standards specified by the Accord. The scope of this initial fire safety inspection was limited to the review and identification of major fire safety issues. The inspection did not include identification of minor deficiencies, which will be further addressed as part of follow-up inspections.**

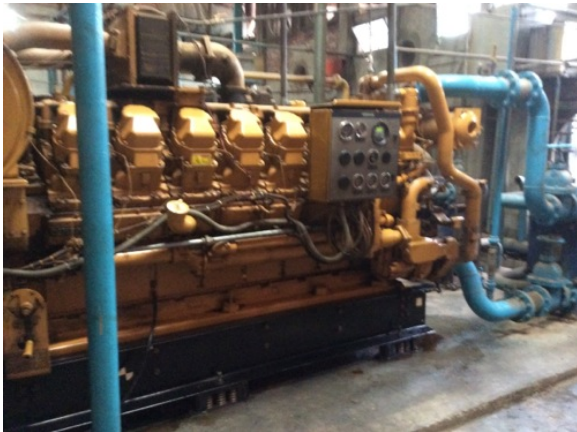
**Table 1 summarizes the major fire safety issues identified during the inspection. Recommendations have been provided to address each issue.**

**An implementation schedule shall be developed by the factory to remediate each of the findings. The specific timing of improvements, including any requested extensions due to design / installation constraints, shall be submitted to the Accord for approval.**

**Table 1. Findings And Recommendations**

No.	Category	Finding	Recommendation	Remediation Timeframe
F-1	Fire Rated Construction	The boiler, generator, and transformer room located on the ground floor, is not separated by fire-rated construction, openings, non-rated doors, and penetrations.	Separate the boiler, generator, and transformer room by a minimum 2-hr fire-rated construction. Seal and/or protected all openings to maintain the required fire separations	Within 3 months





---

F-2	Fire Rated Construction	Areas used for combustible storage on the first, second, third, fourth and eighth floors are not separated by fire-rated construction.	<p>Provide dedicated storage rooms separated by minimum 1-hr fire-rated construction.</p> <p>Where separate storage rooms are not feasible, provide defined storage areas and limit the storage arrangement as follows:</p> <ul style="list-style-type: none"><li>- Maximum height of 2.4m and maximum area of 23m<sup>2</sup></li><li>- If sprinkler protected: maximum height of 3.66m and maximum area of 93m<sup>2</sup></li></ul> <p>Separate areas of unenclosed combustible storage by a minimum clear distance of 3m.</p>	Within 3 months
-----	-------------------------	--	---	-----------------



---

F-3	Fire Rated Construction	Storage rooms used for combustible storage on the ground, first and second floors are not separated by fire-rated construction.	Provide dedicated storage rooms separated by minimum 1-hr fire-rated construction.	Within 3 months
-----	-------------------------	---	--	-----------------



F-4	Fire Rated Construction	The exit stairs are not separated from work areas, and other spaces on each floor by fire-rated construction. This was reflected throughout the building on all floors.	Provide minimum 1.5-hr fire rated doors and seal all unprotected openings to separate the exit stairs from work areas and other building spaces on all floor levels. Ensure that the fire doors are self-closing and positive latching and that they are provided with fire exit (panic) hardware where serving production floors.	Within 3 months
			If fire doors are required to be held open for functional reasons, provide automatic-closing devices tied to the fire alarm system.	



F-5	Fire Rated Construction	Unsealed penetrations and openings on all floors are located in each exit stair enclosures.	Seal all penetrations and openings in exit stair enclosure walls to maintain the fire separation.	Within 3 months
-----	-------------------------	---	---	-----------------



F-6	Fire Rated Construction	The exit discharge path serving all exits is less than 10 ft wide and is not separated from the building interior.	Seal all penetrations and openings to the interior of the building along the discharge path, up to a height of 10 ft., to provide a minimum 1-hr fire separation.  Alternatively, provide a second remote discharge path to the public way (only include this if feasible).	Within 6 months
F-7	Egress	Egress doors / gates with locking features are provided at building exits, exit stairs, along egress routes, and exit discharge. This was reflected throughout the building on all floors.	Remove locking features from all egress doors / gates.  If locks are required for security reasons, utilize special door locking features complying with NFPA 101.	Immediate



---

F-8	Egress	Storage was located in all exit stairs, on each floor.	Remove all storage from exit stairs and egress paths.	Immediate
-----	--------	--	---	-----------



F-9	Egress	Collapsible gates / sliding doors are provided at building exits, exit stairs, along egress routes, and exit discharge. This was reflected throughout the building on all floors.	<p>Replace all gates / sliding doors along the means of egress with side-hinged, swinging egress doors.</p> <p>If locks are required for security reasons, utilize special door locking features complying with NFPA 101.</p>	Within 1 month
-----	--------	---	---	----------------



F-10	Fire Protection	The high-rise building has an occupied floor greater than 23m (75 ft) and is not provided with automatic sprinkler protection. The large occupant loads, heavy fuel loading, and anticipated extended egress times warrant sprinkler protection.	Provide automatic sprinkler protection throughout the building in accordance with NFPA 13.	Design within 6 months, install within 12 months
------	-----------------	--	--	--

F-11	Fire Protection	Inspection, testing, and maintenance of the fire alarm system is not in accordance with NFPA 72.	Inspect, test and maintain the fire alarm system, and keep written records on-site, in accordance with NFPA 72.	Within 3 months
------	-----------------	--	---	-----------------

F-12	Fire Protection	In addition to having conventional type smoke detectors the building is also equipped with single-station smoke alarms. Smoke alarm activation sounds only a local alarm and does not provide automatic fire alarm notification of occupants.	Remove single-station smoke alarms.	Within 6 months
------	-----------------	---	-------------------------------------	-----------------



F-13	Egress Lighting	Exit signage not illuminated (burned out, broken, etc.). This was reflected throughout the building on various floors.	Regularly inspect all exit signage and replace/install lights as needed to illuminate signs.	Within 1 month
F-14	Egress Lighting	Manual on-off switch is provided for emergency lighting units. This was reflected throughout the building in various locations.	Remove manual on/off switches from emergency lighting units to prevent them from being switched off.	Within 1 month



F-15	Egress Lighting	Inspection, testing, and maintenance for the emergency lighting system was not in accordance with The ACCORD standard.	Inspect, test and maintain the emergency lighting system in accordance with The ACCORD standard. Keep written records on-site.	Within 3 months
F-16	Egress Lighting	Based on the number and location of emergency lights observed, adequate illumination levels are not anticipated along egress routes. This was reflected throughout the building on all floors.	Test the emergency lighting system on each floor and provide additional emergency fixtures to provide adequate illumination along the means of egress. Provide a minimum illumination of 10 lux at the floor level within exit stairs and exit discharge paths and minimum 2.5 lux along exit access aisles.	Within 3 months