

# **FIRE SAFETY INSPECTION REPORT**

**RUSSEL GARMENTS (BUILDING 2)  
KATHALI, BHALUKA, MMYMENSINGH, BANGLADESH,  
EAST DELPARA, FATULLA, NARAYANGANJ,  
BANGLADESH.**

**OTHER FACTORIES: NONE**



**ACCORD**  
on Fire and Building Safety in Bangladesh



April 29, 2014

## **SUMMARY**



**Russel Garments (Building 2) was surveyed for fire safety on 4/29/2014 by Hughes Associates, Inc. This summary identifies the major deficiencies that were identified during the inspection.**

**The purpose of this survey was to identify significant fire safety issues and to provide recommendations for remediation based on applicable standards specified by the Accord. The scope of this initial fire safety inspection was limited to the review and identification of major fire safety issues. The inspection did not include identification of minor deficiencies, which will be further addressed as part of follow-up inspections.**

**Table 1 summarizes the major fire safety issues identified during the inspection. Recommendations have been provided to address each issue.**

**An implementation schedule shall be developed by the factory to remediate each of the findings. The specific timing of improvements, including any requested extensions due to design / installation constraints, shall be submitted to the Accord for approval.**

**Table 1. Findings And Recommendations**

No.	Category	Finding	Recommendation	Remediation Timeframe	
F-1	Fire Rated Construction	Flammable liquid storage area is not separated by fire-rated construction (openings, non-rated doors).	Separate the flammable liquid storage room by a minimum 2-hr fire-rated construction. Seal and protected all openings to maintain the required fire separations.	Within 3 months	
					
F-2	Fire Rated Construction	The boiler rooms are not separated by fire-rated construction on the 3rd and 4th floors (openings, non-rated doors, penetrations).	Separate the boiler room by a minimum 2-hr fire-rated construction. Seal and protected all openings to maintain the required fire separations	Within 3 months	

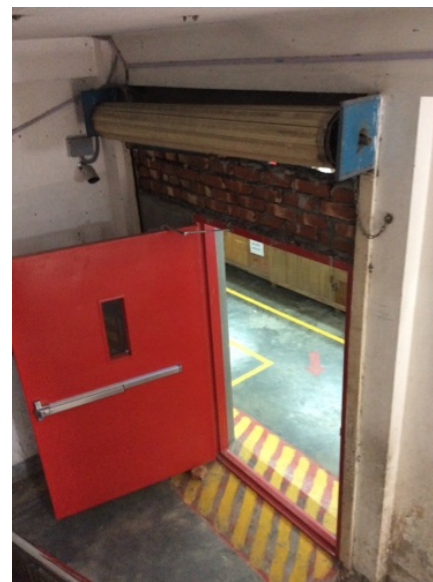


---

F-3	Fire Rated Construction	The compressor, generator and transformer rooms are not separated by fire-rated construction (openings, non-rated doors, penetrations).	Separate the compressor, generator and transformer rooms by a minimum 2-hr fire-rated construction. Seal and/or protected all openings to maintain the required fire separations	Within 3 months
-----	-------------------------	---	--	-----------------



F-4	Fire Rated Construction	The exit stairs are not separated from work areas on each floor by fire-rated construction.	Provide minimum 1.5-hr fire rated doors and seal all unprotected openings to separate the exit stairs from work areas and other building spaces on all floor levels. Ensure that the fire doors are self-closing and positive latching and that they are provided with fire exit (panic) hardware where serving production floors.  If fire doors are required to be held open for functional reasons, provide automatic-closing devices tied to the fire alarm system.	Within 3 months
-----	-------------------------	---	---	-----------------



F-5	Fire Rated Construction	The south exit stair is not separated from work areas on each floor by fire-rated construction. The north exit stair is not separated from work area on the ground floor by fire-rated construction.	Separate the exit stair enclosure by a minimum 2-hr fire-rated construction. Seal and protected all openings to maintain the required fire separations.	Within 3 months
-----	-------------------------	--	---	-----------------



F-6	Fire Rated Construction	Areas used for combustible storage on the ground floor (proposed fir organic fabric) and accessories store are not separated by fire-rated construction.	Provide dedicated storage rooms separated by minimum 1-hr fire-rated construction.  Where separate storage rooms are not feasible, provide defined storage areas and limit the storage arrangement as follows: - Maximum height of 2.4m and maximum area of 23m <sup>2</sup> - If sprinkler protected: maximum height of 3.66m and maximum area of 93m <sup>2</sup>  Separate areas of unenclosed combustible storage by a minimum clear distance of 3m.	Within 3 months
-----	-------------------------	--	--	-----------------



F-7 Egress

Egress doors and gates with locking features are provided at building exits, exit stairs and exit discharge.

Remove locking features from all egress doors or gates.

If locks are required for security reasons, utilize special door locking features complying with NFPA 101.

Immediate





F-8 Egress

Storage was located on the 2nd and 4th in the south exit stair.

Remove all storage from exit stairs and egress paths.

Immediate



F-9	Egress	Collapsible gates, roll down shutters and sliding doors are provided at building exits, exit stairs and exit discharge.	Replace all gates, roll down shutters and sliding doors along the means of egress with side-hinged, swinging egress doors.  If locks are required for security reasons, utilize special door locking features complying with NFPA 101.	Within 1 month
-----	--------	---	--	----------------



F-10	Fire Protection	The fire alarm system is antiquated, not a listed system, and does not provide alarm and notification features consistent with acceptable standards.	Replace the fire alarm system with a new, listed addressable fire alarm system in accordance with NFPA 72.	Design within 4 months, install within 9 months
------	-----------------	--	--	---



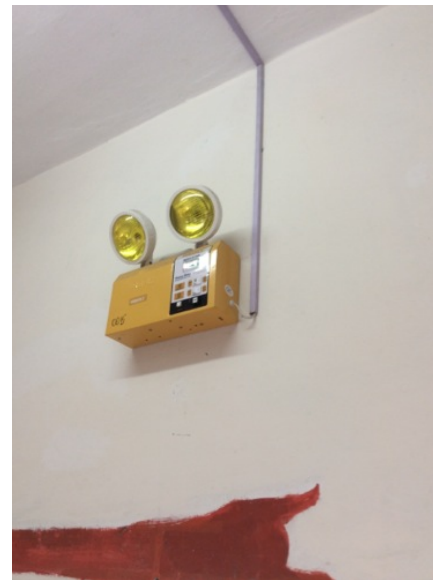
F-11	Fire Protection	Inspection, testing, and maintenance for the fire alarm system was not in accordance with NFPA 72.	Inspect, test and maintain the fire alarm system, and keep written records on-site, in accordance with NFPA 72.	Within 3 months
------	-----------------	--	---	-----------------

F-12	Fire Protection	The building is equipped with single-station smoke alarms. Smoke alarm activation sounds only a local alarm and does not provide automatic fire alarm notification of occupants.	Replace the single-station smoke alarms. Provide automatic smoke detection throughout the building in accordance with NFPA 72.	Within 6 months
------	-----------------	--	--	-----------------



---

F-13	Egress Lighting	Manual on-off switch is provided for emergency lighting units.	Remove manual on/off switches from emergency lighting units to prevent them from being switched off.	Within 1 month
------	-----------------	--	--	----------------



---

F-14	Egress Lighting	Inspection, testing, and maintenance for the emergency lighting system was not in accordance with The ACCORD standard.	Inspect, test and maintain the emergency lighting system in accordance with The ACCORD standard. Keep written records on-site.	Within 3 months
------	-----------------	--	--	-----------------