

FIRE SAFETY INSPECTION REPORT

AHSAN COMPOSITE LTD.

**WARD - 7, HOLDING - 99, BLOCK - D, CHANDRA,
KALIAKOIR**

OTHER FACTORIES: NONE



ACCORD
on Fire and Building Safety in Bangladesh

June 3, 2014

SUMMARY

Ahsan Composite Ltd. was surveyed for fire safety on 6/3/2014 by Hughes Associates, Inc. This summary identifies the major deficiencies that were identified during the inspection.

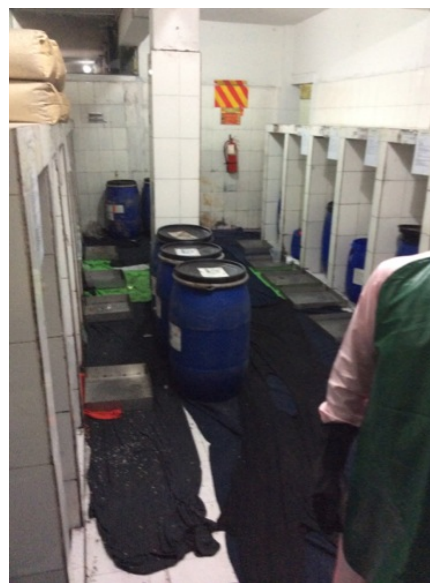
The purpose of this survey was to identify significant fire safety issues and to provide recommendations for remediation based on applicable standards specified by the Accord. The scope of this initial fire safety inspection was limited to the review and identification of major fire safety issues. The inspection did not include identification of minor deficiencies, which will be further addressed as part of follow-up inspections.

Tables 1 - 3 summarizes the major fire safety issues identified during the inspection. Recommendations have been provided to address each issue.

An implementation schedule shall be developed by the factory to remediate each of the findings. The specific timing of improvements, including any requested extensions due to design / installation constraints, shall be submitted to the Accord for approval.

Table 1. Findings And Recommendations - Building 1

No.	Category	Finding	Recommendation	Remediation Timeframe
F-1	Fire Rated Construction	Hazardous materials storage area is not separated by fire-rated construction (openings, non-rated doors, penetrations). Location: Ground floor.	Separate the hazardous materials storage room by a minimum 2-hr fire-rated construction. Seal and/or protected all openings to maintain the required fire separations.	Within 3 months





F-2	Fire Rated Construction	Areas used for combustible storage are not separated by fire-rated construction. Location: Ground floor.	Provide dedicated storage rooms separated by minimum 1-hr fire-rated construction. Where separate storage rooms are not feasible, provide defined storage areas and limit the storage arrangement as follows: Maximum height of 2.4m and maximum area of 23m ²	Within 3 months
-----	-------------------------	---	---	-----------------





F-3	Fire Rated Construction	The boiler, generator and transformer rooms is not separated by fire-rated construction (openings, non-rated doors, penetrations). Location: Ground floor in separate buildings	Separate the boiler, generator and transformer rooms by a minimum 2-hr fire-rated construction. Seal and/or protected all openings to maintain the required fire separations	Within 3 months
-----	-------------------------	---	--	-----------------





F-4 Egress

Egress doors / gates with locking features are provided at building exits, exit stairs, along egress routes, exit discharge.

Remove locking features from all egress doors / gates.

Immediate

If locks are required for security reasons, utilize special door locking features complying with NFPA 101.

Location: Ground floor all gates/doors were open and unlocked during the inspection.



F-5	Egress	Sliding doors are provided at building exits, exit stairs, along egress routes, exit discharge. Location: At both exits on ground floor.	Replace all sliding doors along the means of egress with side-hinged, swinging egress doors. If locks are required for security reasons, utilize special door locking features complying with NFPA 101.	Within 1 month
-----	--------	---	--	----------------



F-6	Fire Protection	The fire alarm system is antiquated, not a listed system, and does not provide alarm and notification features consistent with acceptable standards.	Replace the fire alarm system with a new, listed addressable fire alarm system in accordance with NFPA 72.	Design within 4 months, install within 9 months
-----	-----------------	--	--	---

F-7	Fire Protection	Activation of the fire alarm system by a manual fire alarm station provides automatic occupant notification only on the floor of alarm and not throughout the building. The building has a mezzanine with no notification.	Configure the fire alarm system to initiate automatic occupant notification on all floor levels to facilitate whole-building evacuation upon any manual fire alarm station activation.	Within 1 months
F-8	Fire Protection	Activation of the fire alarm system by a manual fire alarm station provides automatic occupant notification only on the floor of alarm and not throughout the building.	Configure the fire alarm system to initiate automatic occupant notification on all floor levels to facilitate whole-building evacuation upon any manual fire alarm station activation.	Within 1 months
F-9	Fire Protection	Inspection, testing, and maintenance records for the fire alarm system were not available.	Inspection, testing, and maintenance for the fire alarm system it was not in accordance with NFPA 72.	Within 3 months
F-10	Fire Protection	The building is equipped with single-station smoke alarms. Smoke alarm activation sounds only a local alarm and does not provide automatic fire alarm notification of occupants.	Remove single-station smoke alarms. Provide automatic smoke detection throughout the building, tied into the fire alarm system, in accordance with NFPA 72.	Within 6 months

F-11	Egress Lighting	Exit signage not illuminated (burned out, broken, etc.). Location: Ground on factory floor exit discharge.	Regularly inspect all exit signage and replace/install lights as needed to illuminate signs.	Within 1 month
------	-----------------	---	--	----------------



F-12	Egress Lighting	Emergency lighting did not function in test mode (burned out, broken, etc.). Location: Ground on factory floor.	Regularly test the emergency lighting system on each floor and replace/repair lights as needed.	Within 1 month
------	-----------------	--	---	----------------



F-13	Egress Lighting	Inspection, testing, and maintenance records for the emergency lighting system were not available.	Inspect, test and maintain the emergency lighting system in accordance with The ACCORD standard. Keep written records on-site.	Within 3 months
F-14	Egress Lighting	Based on the number and location of emergency lights observed, adequate illumination levels are not anticipated along egress routes. Location: Ground floor on factory floor.	Test the emergency lighting system on each floor and provide additional emergency fixtures to provide adequate illumination along the means of egress. Provide a minimum illumination of 10 lux at the floor level within exit stairs and exit discharge paths and minimum 2.5 lux along exit access aisles.	Within 3 months



Table 2. Findings And Recommendations - Building 3

No.	Category	Finding	Recommendation	Remediation Timeframe
F-1	Fire Rated Construction	Unsealed penetrations and openings are located in exit stair enclosures. Location: South stairwell connected to building (3) has openings into stairwell.	Seal all penetrations and openings in exit stair enclosure walls to maintain the fire separation.	Within 3 months





F-2	Fire Rated Construction	Areas used for combustible storage are not separated by fire-rated construction. Location: On all floors.	Provide dedicated storage rooms separated by minimum 1-hr fire-rated construction. Where separate storage rooms are not feasible, provide defined storage areas and limit the storage arrangement as follows: Maximum height of 2.4m and maximum area of 23m ² Separate areas of unenclosed combustible storage by a minimum clear distance of 3m.	Within 3 months
-----	-------------------------	--	---	-----------------





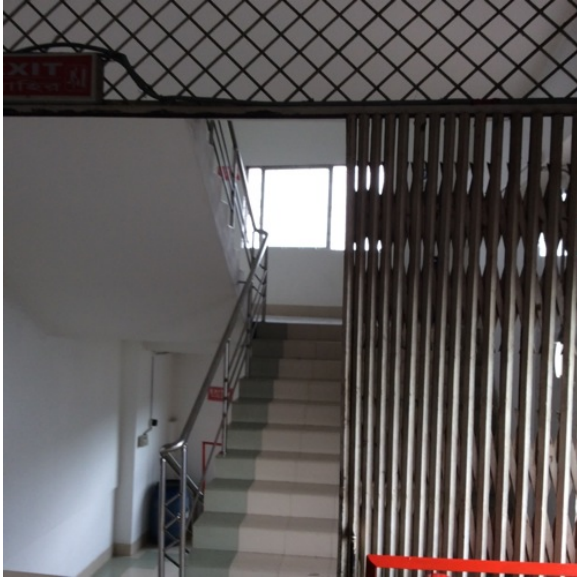
F-3 Egress

Egress doors / gates with locking features are provided at building exits, exit stairs, along egress routes, exit discharge.
Location: On all floors all gates/doors were open and unlocked during the inspection.

Remove locking features from all egress doors / gates.
If locks are required for security reasons, utilize special door locking features complying with NFPA 101.

Immediate





F-4 Egress

Storage was located in the exit stair. Location under stairs.

Remove all storage from exit stairs and egress paths.

Immediate





F-5 Egress

Collapsible gates / sliding doors are provided at building exits, exit stairs, along egress routes, exit discharge.
Location: All floors.

Replace all gates / sliding doors along the means of egress with side-hinged, swinging egress doors.

Within 1 month

If locks are required for security reasons, utilize special door locking features complying with NFPA 101.





F-6 Egress

Handrails are not provided in the exit stair. Location: Northwest stairwell missing hand rail in stairwell.

Provide handrails on at least one side of exit stair.

Within 3 months





F-7	Fire Protection	The fire alarm system is antiquated, not a listed system, and does not provide alarm and notification features consistent with acceptable standards.	Replace the fire alarm system with a new, listed addressable fire alarm system in accordance with NFPA 72.	Design within 4 months, install within 9 months
F-8	Fire Protection	Activation of the fire alarm system by a manual fire alarm station provides automatic occupant notification only on the floor of alarm and not throughout the building. Location: On all floors	Configure the fire alarm system to initiate automatic occupant notification on all floor levels to facilitate whole-building evacuation upon any manual fire alarm station activation.	Within 1 months



F-9	Fire Protection	The building is equipped with single-station smoke alarms. Smoke alarm activation sounds only a local alarm and does not provide automatic fire alarm notification of occupants.	Replace the single-station smoke alarms with automatic smoke detectors tied into the fire alarm system. Configure the fire alarm system to initiate occupant notification upon activation of any two smoke detectors in addition to the manual fire alarm stations.	Within 6 months
F-10	Egress Lighting	Exit signage not illuminated (burned out, broken, etc.). Location: On all floors	Regularly inspect all exit signage and replace/install lights as needed to illuminate signs.	Within 1 month



F-11

Egress Lighting

Inspection, testing, and maintenance records for the emergency lighting system were not available.

Inspect, test and maintain the emergency lighting system in accordance with The ACCORD standard. Keep written records on-site.

Within 3 months

F-12	Egress Lighting	Based on the number and location of emergency lights observed, adequate illumination levels are not anticipated along egress routes. Location: On all floors.	Test the emergency lighting system on each floor and provide additional emergency fixtures to provide adequate illumination along the means of egress. Provide a minimum illumination of 10 lux at the floor level within exit stairs and exit discharge paths and minimum 2.5 lux along exit access aisles.	Within 3 months
------	-----------------	--	--	-----------------



Table 3. Findings And Recommendations - Building 6

No.	Category	Finding	Recommendation	Remediation Timeframe
F-1	Fire Rated Construction	Areas used for combustible storage are not separated by fire-rated construction. Location: Ground floor.	Provide dedicated storage rooms separated by minimum 1-hr fire-rated construction. Where separate storage rooms are not feasible, provide defined storage areas and limit the storage arrangement as follows: Maximum height of 2.4m and maximum area of 23m ² Separate areas of unenclosed combustible storage by a minimum clear distance of 3m.	Within 3 months





F-2 Egress

Egress doors / gates with locking features are provided at building exits, exit stairs, along egress routes, exit discharge.
Location: Ground floor
all gates/doors were open and unlocked during the inspection.

Remove locking features from all egress doors / gates.

If locks are required for security reasons, utilize special door locking features complying with NFPA 101.

Immediate





F-3 Egress

Storage was located in the egress path.
Location: Ground floor storage area.

Keep egress paths and stairs clear of storage.

Immediate





F-4 Egress

Collapsible gates / sliding doors are provided at building exits, exit stairs, along egress routes, exit discharge.
Location: Ground floor.

Replace all gates / sliding doors along the means of egress with side-hinged, swinging egress doors.

Within 1 month

If locks are required for security reasons, utilize special door locking features complying with NFPA 101.





F-5	Fire Protection	The fire alarm system is antiquated, not a listed system, and does not provide alarm and notification features consistent with acceptable standards.	Replace the fire alarm system with a new, listed addressable fire alarm system in accordance with NFPA 72.	Design within 4 months, install within 9 months
F-6	Fire Protection	Activation of the fire alarm system by a manual fire alarm station provides automatic occupant notification only on the floor of alarm and not throughout the building. Location: Ground floor.	Configure the fire alarm system to initiate automatic occupant notification on all floor levels to facilitate whole-building evacuation upon any manual fire alarm station activation.	Within 1 months
F-7	Fire Protection	Inspection, testing, and maintenance records for the fire alarm system were not available.	Inspect, test and maintain the fire alarm system, and keep written records on-site, in accordance with NFPA 72.	Within 3 months

F-8	Fire Protection	The building is equipped with single-station smoke alarms. Smoke alarm activation sounds only a local alarm and does not provide automatic fire alarm notification of occupants.	Replace the single-station smoke alarms with automatic smoke detectors tied into the fire alarm system. Configure the fire alarm system to initiate occupant notification upon activation of any two smoke detectors in addition to the manual fire alarm stations.	Within 6 months
F-9	Egress Lighting	Exit signage not illuminated (burned out, broken, etc.). Location: Ground floor.	Regularly inspect all exit signage and replace/install lights as needed to illuminate signs.	Within 1 month



F-10	Egress Lighting	Inspection, testing, and maintenance records for the emergency lighting system were not available.	Inspect, test and maintain the emergency lighting system in accordance with The ACCORD standard. Keep written records on-site.	Within 3 months
------	-----------------	--	--	-----------------

F-11	Egress Lighting	Based on the number and location of emergency lights observed, adequate illumination levels are not anticipated along egress routes. Location: Ground floor.	Test the emergency lighting system on each floor and provide additional emergency fixtures to provide adequate illumination along the means of egress. Provide a minimum illumination of 10 lux at the floor level within exit stairs and exit discharge paths and minimum 2.5 lux along exit access aisles.	Within 3 months
------	-----------------	---	--	-----------------

