

FIRE SAFETY INSPECTION REPORT

TEMAKAW FASHION LIMITED
808/1-2, BEGUM ROKEYA SHARONI, SHEWRAPARA,
MIRPUR

OTHER FACTORIES: NONE



ACCORD
on Fire and Building Safety in Bangladesh



April 26, 2014

SUMMARY

Temakaw Fashion Limited was surveyed for fire safety on 4/26/2014 by Hughes Associates, Inc. This summary identifies the major deficiencies that were identified during the inspection.

The purpose of this survey was to identify significant fire safety issues and to provide recommendations for remediation based on applicable standards specified by the Accord. The scope of this initial fire safety inspection was limited to the review and identification of major fire safety issues. The inspection did not include identification of minor deficiencies, which will be further addressed as part of follow-up inspections.

Table 1 summarizes the major fire safety issues identified during the inspection. Recommendations have been provided to address each issue.

An implementation schedule shall be developed by the factory to remediate each of the findings. The specific timing of improvements, including any requested extensions due to design / installation constraints, shall be submitted to the Accord for approval.

Table 1. Findings And Recommendations

No.	Category	Finding	Recommendation	Remediation Timeframe
F-1	Fire Rated Construction	Barrels of diesel fuel were stored at the base of the exterior fire escape.	<p>Immediately remove all combustible liquid storage from under the fire escape.</p> <p>Move all flammable and combustible liquid storage to a separate room with a minimum 2-hr fire-rated construction. Seal and/or protected all openings to maintain the required fire separations.</p>	Immediate



F-2	Fire Rated Construction	Unseparated large quantity storage areas were present on most floors.	<p>Provide dedicated storage rooms separated by minimum 1-hr fire-rated construction.</p> <p>Where separate storage rooms are not feasible, provide defined storage areas and limit the storage to a maximum height of 2.4m and maximum area of 23m².</p>	Within 3 months
-----	-------------------------	---	--	-----------------



F-3	Fire Rated Construction	The boilers were not separated by fire-rated construction and were open to factory floors on floors 2,3,6.	Separate the boiler by a minimum 2-hr fire-rated construction. Seal and/or protected all openings to maintain the required fire separations	Within 3 months
-----	-------------------------	--	---	-----------------



F-4	Fire Rated Construction	The exit stairs are not separated from work or storage areas on each floor by fire-rated construction.	Provide minimum 1.5-hr fire rated doors and seal all unprotected openings to separate the exit stairs from work areas and other building spaces on all floor levels. Ensure that the fire doors are self-closing and positive latching and that they are provided with fire exit (panic) hardware where serving production floors.	Within 3 months
			If fire doors are required to be held open for functional reasons, provide automatic-closing devices tied to the fire alarm system.	



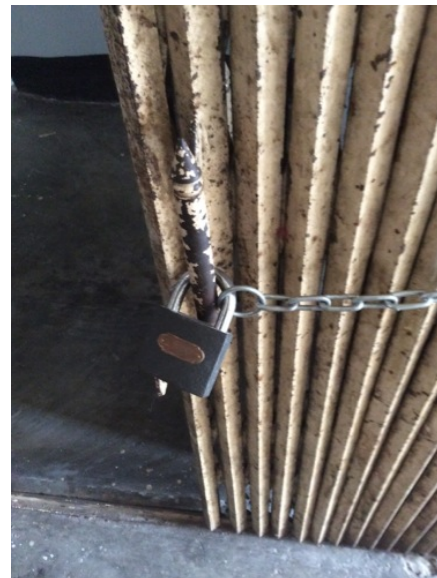
F-5 Egress

Egress doors and gates with locking features are provided at building exits, exit stairs, along egress routes, and at exit discharge at various locations throughout the building. All gates/doors were open and unlocked during the inspection.

Remove locking features from all egress doors and gates.

If locks are required for security reasons, utilize special door locking features complying with NFPA 101.

Immediate



F-6 Egress

Curtains were located in exit stairs on the ground floor landing, serving as a check station.

Remove all curtains from exit stairs, as they are combustible and can impede egress.

Immediate



F-7	Egress	Storage was located in the egress path, specifically in the first floor packing area.	Keep egress paths and stairs clear of storage.	Immediat
-----	--------	---	--	----------



F-8	Egress	Collapsible gates are provided at building exits, exit stairs, along egress routes, and at exit discharge at various locations throughout the building.	Replace all gates / sliding doors along the means of egress with side-hinged, swinging egress doors. If locks are required for security reasons, utilize special door locking features complying with NFPA 101.	Within 1 month
-----	--------	---	--	----------------



F-9	Egress	Egress doors at fire escape and between building sections swing opposite the direction of egress.	Modify the egress door to swing in the direction of egress travel.	Within 3 months
-----	--------	---	--	-----------------



F-10	Egress	The width of egress aisles is less than 36-in between the cutting tables and the wall in all cutting locations.	Provide minimum aisle widths of 36-in.	Within 3 months
------	--------	---	--	-----------------



F-11	Fire Protection	The fire alarm system is antiquated, not a listed system, and does not provide alarm and notification features consistent with acceptable standards.	Replace the fire alarm system with a new, listed addressable fire alarm system in accordance with NFPA 72.	Design within 4 months, install within 9 months
------	-----------------	--	--	---



F-12	Fire Protection	Inspection, testing, and maintenance for the fire alarm system was not in accordance with NFPA 72.	Inspect, test and maintain the fire alarm system, and keep written records on-site, in accordance with NFPA 72.	Within 3 months
------	-----------------	--	---	-----------------



F-13	Fire Protection	The building is equipped with single-station smoke alarms. Smoke alarm activation sounds only a local alarm and does not provide automatic fire alarm notification of occupants.	Replace the single-station smoke alarms with automatic smoke detectors tied into the fire alarm system. Configure the fire alarm system to initiate occupant notification upon activation of any two smoke detectors in addition to the manual fire alarm stations.	Within 6 months
------	-----------------	--	---	-----------------



F-14	Egress Lighting	Based on the number and location of emergency lights observed, adequate illumination levels are not anticipated along egress routes on all floors.	Test the emergency lighting system on each floor and provide additional emergency fixtures to provide adequate illumination along the means of egress. Provide a minimum illumination of 10 lux at the floor level within exit stairs and exit discharge paths and minimum 2.5 lux along exit access aisles.	Within 3 months
------	-----------------	--	--	-----------------



F-15	Egress Lighting	Manual on-off switch is provided for emergency lighting on the second floor.	Remove manual on/off switches from emergency lighting units to prevent them from being switched off.	Within 3 months
------	-----------------	--	--	-----------------



F-16	Egress Lighting	Inspection, testing, and maintenance records for the emergency lighting system were not available.	Inspect, test and maintain the emergency lighting system in accordance with The ACCORD standard. Keep written records on-site.	Within 3 months
------	-----------------	--	--	-----------------

