

FIRE SAFETY INSPECTION REPORT

NORBAN COMTEX
MOUZA SARABO CHAKRABORTY
KASHIMPUR

OTHER FACTORIES: NONE



ACCORD
on Fire and Building Safety in Bangladesh

April 12, 2014

SUMMARY

Norban Comtex was surveyed for fire safety on 4/12/2014 by Hughes Associates, Inc. This summary identifies the major deficiencies that were identified during the inspection.

The purpose of this survey was to identify significant fire safety issues and to provide recommendations for remediation based on applicable standards specified by the Accord. The scope of this initial fire safety inspection was limited to the review and identification of major fire safety issues. The inspection did not include identification of minor deficiencies, which will be further addressed as part of follow-up inspections.

Tables 1 - 2 summarizes the major fire safety issues identified during the inspection. Recommendations have been provided to address each issue.

An implementation schedule shall be developed by the factory to remediate each of the findings. The specific timing of improvements, including any requested extensions due to design / installation constraints, shall be submitted to the Accord for approval.

Table 1. Findings And Recommendations - Garments Building

No.	Category	Finding	Recommendation	Remediation Timeframe
F-1	Fire Rated Construction	Storage rooms and process areas throughout the building used for combustible storage are not separated by fire-rated construction.	<p>Provide dedicated storage rooms separated by minimum 1-hr fire-rated construction.</p> <p>Where separate storage rooms are not feasible, provide defined storage areas and limit the storage arrangement as follows:</p> <ul style="list-style-type: none"> - Maximum height of 2.4m and maximum area of 23m² - If sprinkler protected: maximum height of 3.66m and maximum area of 93m² <p>Separate areas of unenclosed combustible storage by a minimum clear distance of 3m.</p>	Within 3 months



F-2	Fire Rated Construction	The exit stairs are not separated from work areas on each floor by fire-rated construction.	<p>Provide minimum 1.5-hr fire rated doors and seal all unprotected openings to separate the exit stairs from work areas and other building spaces on all floor levels. Ensure that the fire doors are self-closing and positive latching and that they are provided with fire exit (panic) hardware where serving production floors.</p> <p>If fire doors are required to be held open for functional reasons, provide automatic-closing devices tied to the fire alarm system.</p>	Within 3 months
-----	-------------------------	---	--	-----------------



F-3	Egress	Egress doors and gates with locking features are provided throughout the stairwells.	<p>Remove locking features from all egress doors / gates.</p> <p>If locks are required for security reasons, utilize special door locking features complying with NFPA 101.</p>	Immediate
-----	--------	--	---	-----------



F-4	Egress	Collapsible gates and sliding doors are provided throughout the building.	Replace all gates and sliding doors along the means of egress with side-hinged, swinging egress doors.	Within 1 month
-----	--------	---	--	----------------

If locks are required for security reasons, utilize special door locking features complying with NFPA 101.



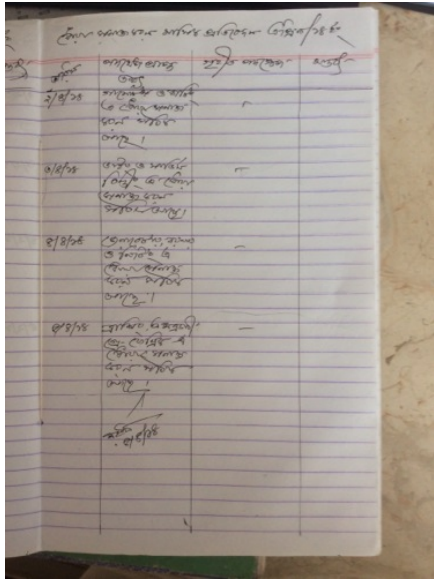
F-5	Egress	The width of egress aisles in the hang tag section is less than 36-in.	Provide minimum aisle widths of 36-in.	Within 3 months
-----	--------	--	--	-----------------



F-6	Fire Protection	The fire alarm system is antiquated, not a listed system, and does not provide alarm and notification features consistent with acceptable standards.	Replace the fire alarm system with a new, listed addressable fire alarm system in accordance with NFPA 72.	Design within 4 months, install within 9 months
-----	-----------------	--	--	---



F-7	Fire Protection	Inspection, testing, and maintenance of the fire alarm system is not in accordance with NFPA 72.	Inspect, test and maintain the fire alarm system, and keep written records on-site, in accordance with NFPA 72.	Within 3 months
-----	-----------------	--	---	-----------------



F-8	Fire Protection	Smoke detectors are not interconnected to fire alarms.	Tie the smoke detectors into the fire alarm system. Configure the fire alarm system to initiate occupant notification upon activation of any two smoke detectors in addition to the manual fire alarm stations.	Within 6 months
-----	-----------------	--	---	-----------------



F-9	Egress Lighting	Inspection, testing, and maintenance for the emergency lighting system was not in accordance with The ACCORD standard.	Inspect, test and maintain the emergency lighting system in accordance with The ACCORD standard. Keep written records on-site.	Within 3 months
-----	-----------------	--	--	-----------------



Table 2. Findings And Recommendations - Service Bay/Dyeing

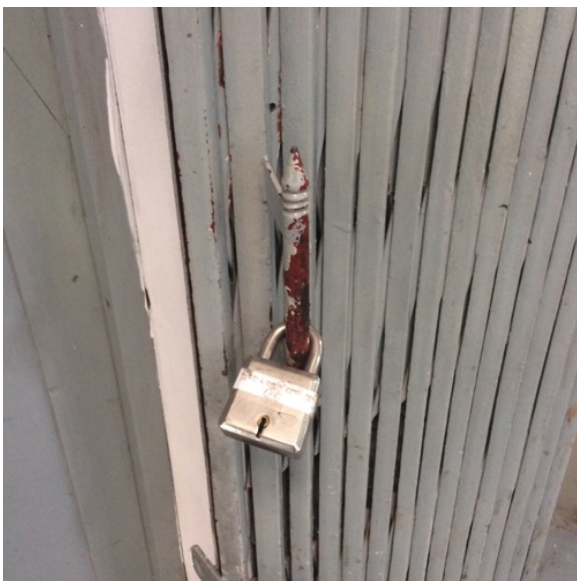
No.	Category	Finding	Recommendation	Remediation Timeframe
F-1	Fire Rated Construction	The exit stairs are not separated from work areas on each floor by fire-rated construction.	<p>Provide minimum 1.5-hr fire rated doors and seal all unprotected openings to separate the exit stairs from work areas and other building spaces on all floor levels. Ensure that the fire doors are self-closing and positive latching and that they are provided with fire exit (panic) hardware where serving production floors.</p> <p>If fire doors are required to be held open for functional reasons, provide automatic-closing devices tied to the fire alarm system.</p>	Within 3 months



F-2	Egress	Storage of significant amounts of hazardous materials was located in the South exit stairs in the basement.	Remove all storage from exit stairs and egress paths.	Immediate
-----	--------	---	---	-----------



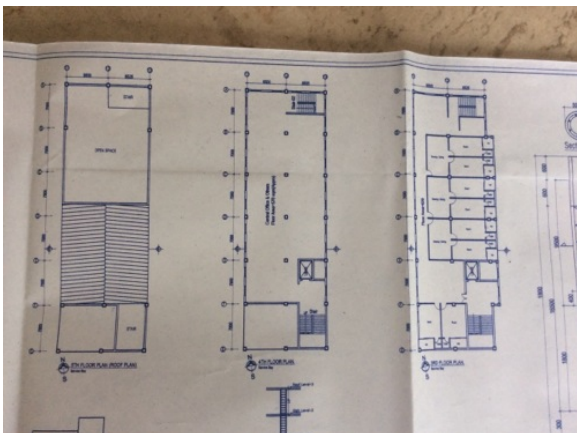
F-3	Egress	Egress doors and gates with locking features are provided at building exits.	Remove locking features from all egress doors and gates. If locks are required for security reasons, utilize special door locking features complying with NFPA 101.	Immediate
-----	--------	--	--	-----------



F-4	Egress	Collapsible gates and sliding doors are provided at building exits.	Replace all gates and sliding doors along the means of egress with side-hinged, swinging egress doors.	Within 1 month
			If locks are required for security reasons, utilize special door locking features complying with NFPA 101.	



F-5	Egress	Exit capacity of floor 5 (416) is not adequate for the occupant load (450).	Reduce occupant load to not more than available exit capacity.	Within 3 months
-----	--------	---	--	-----------------



F-6	Fire Protection	The fire alarm system is antiquated, not a listed system, and does not provide alarm and notification features consistent with acceptable standards.	Replace the fire alarm system with a new, listed addressable fire alarm system in accordance with NFPA 72.	Design within 4 months, install within 9 months
-----	-----------------	--	--	---



F-7	Fire Protection	Inspection, testing, and maintenance of the fire alarm system is not in accordance with NFPA 72.	Inspect, test and maintain the fire alarm system, and keep written records on-site, in accordance with NFPA 72.	Within 3 months
-----	-----------------	--	---	-----------------



F-8	Fire Protection	Smoke detectors are not interconnected to fire alarms.	Tie the smoke detectors into the fire alarm system. Configure the fire alarm system to initiate occupant notification upon activation of any two smoke detectors in addition to the manual fire alarm stations.	Within 6 months
-----	-----------------	--	---	-----------------



F-9	Egress Lighting	Exit signage not illuminated (burned out, broken, etc.).	Regularly inspect all exit signage and replace/install lights as needed to illuminate signs.	Within 1 month
-----	-----------------	--	--	----------------



F-10	Egress Lighting	Inspection, testing, and maintenance for the emergency lighting system was not in accordance with The ACCORD standard.	Inspect, test and maintain the emergency lighting system in accordance with The ACCORD standard. Keep written records on-site.	Within 3 months
------	-----------------	--	--	-----------------



F-11	Egress Lighting	Based on the number and location of emergency lights observed, adequate illumination levels are not anticipated in the North stair.	Test the emergency lighting system on each floor and provide additional emergency fixtures to provide adequate illumination along the means of egress. Provide a minimum illumination of 10 lux at the floor level within exit stairs and exit discharge paths and minimum 2.5 lux along exit access aisles.	Within 3 months
------	-----------------	---	--	-----------------

