

FIRE SAFETY INSPECTION REPORT

**MOON READYWEARS LTD.
BERON, DIAKHALI, ASULIA, SAVAR**

OTHER FACTORIES: NONE



ACCORD
on Fire and Building Safety in Bangladesh

April 17, 2014

SUMMARY

Moon Readywears Ltd. was surveyed for fire safety on 17-04-2014 by Hughes Associates, Inc. This summary identifies the major deficiencies that were identified during the inspection.

The purpose of this survey was to identify significant fire safety issues and to provide recommendations for remediation based on applicable standards specified by the Accord. The scope of this initial fire safety inspection was limited to the review and identification of major fire safety issues. The inspection did not include identification of minor deficiencies, which will be further addressed as part of follow-up inspections.

Tables 1 - 4 summarizes the major fire safety issues identified during the inspection. Recommendations have been provided to address each issue.

An implementation schedule shall be developed by the factory to remediate each of the findings. The specific timing of improvements, including any requested extensions due to design / installation constraints, shall be submitted to the Accord for approval.

Table 1. Findings And Recommendations - Moon Readywears Ltd.

No.	Category	Finding	Recommendation	Remediation Timeframe
F-1	Fire Rated Construction	The exit stairs are not separated from work areas, other spaces on each floor by fire-rated construction.	<p>Provide minimum 1.5-hr fire rated doors and seal all unprotected openings to separate the exit stairs from work areas and other building spaces on all floor levels. Ensure that the fire doors are self-closing and positive latching and that they are provided with fire exit (panic) hardware where serving production floors.</p> <p>If fire doors are required to be held open for functional reasons, provide automatic-closing devices tied to the fire alarm system.</p>	Within 3 months



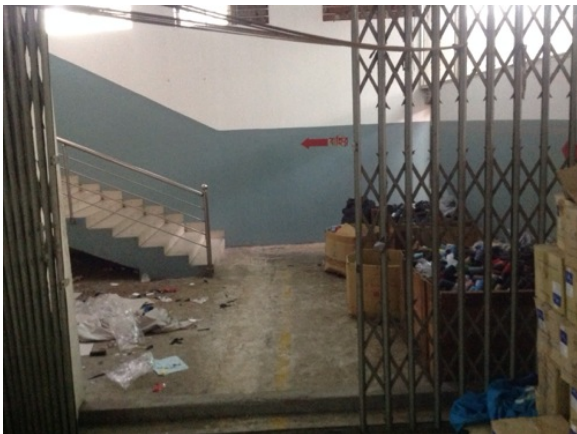


F-2	Fire Rated Construction	The boiler / generator room is not separated by fire-rated construction (openings, non-rated doors, penetrations).	Separate the boiler / generator room by a minimum 2-hr fire-rated construction. Seal and/or protected all openings to maintain the required fire separations	Within 3 months
-----	-------------------------	--	--	-----------------





F-3	Fire Rated Construction	Areas used for storage are not separated by fire-rated construction on ground floor.	Provide dedicated storage rooms separated by minimum 1-hr fire-rated construction. Where separate storage rooms are not feasible, provide defined storage areas and limit the storage arrangement as follows: - Maximum height of 2.4m and maximum area of 23m ² - If sprinkler protected: maximum height of 3.66m and maximum area of 93m ²	Within 3 months
-----	-------------------------	--	---	-----------------



F-4	Fire Rated Construction	Not constructed of proper fire rated materials. Several penetrations and other deficiencies compromise integrity of the room which could lead to increased fire spread.	Provide minimum 1hr fire rated room and seal all unprotected openings to separate from work areas and other building spaces on all floor levels. Ensure that the fire doors are self-closing and fire rated for use.	Within 6 months
-----	-------------------------	---	--	-----------------



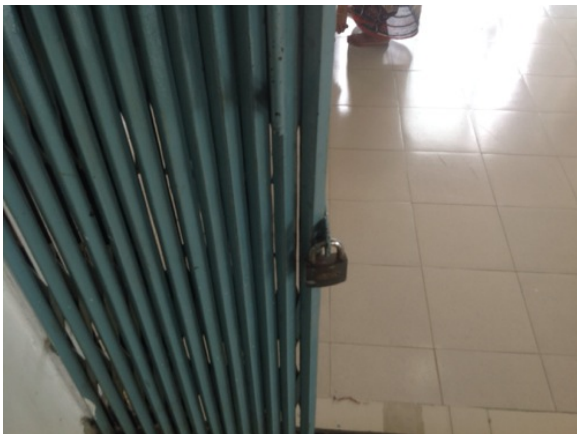
F-5 Egress

Egress doors / gates with locking features are provided at [building exits, exit stairs, along egress routes, exit discharge.

Remove locking features from all egress doors / gates.

Immediate

If locks are required for security reasons, utilize special door locking features complying with NFPA 101.





F-6 Egress

Storage was located in the egress path. the main exit ground floor is being used as a reception area and has desk, chairs and other related items in the exit route.

Keep egress paths and stairs clear of storage.

Immediate





F-7	Egress	Combustable materials hanging over egress access in south exit.	Remove.	Immediate
-----	--------	---	---------	-----------





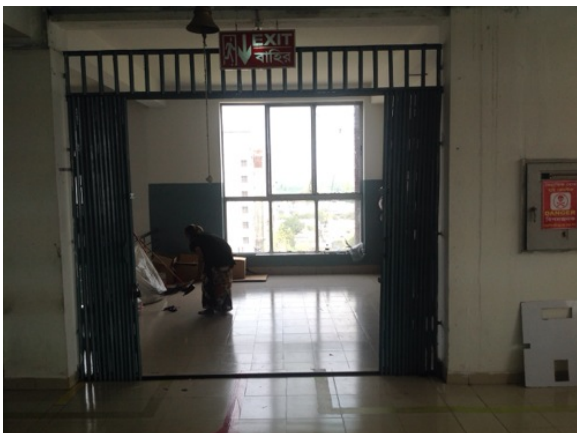
F-8 Egress

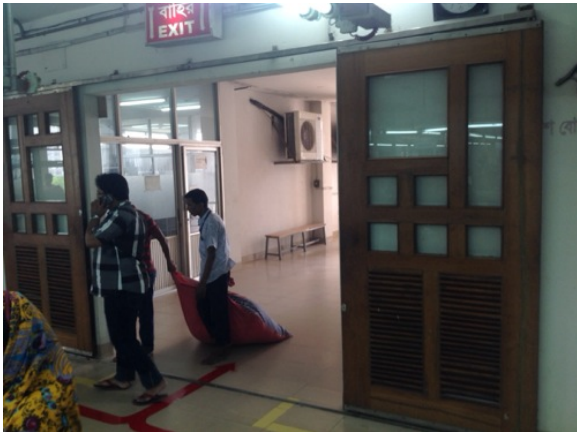
Collapsible gates / sliding doors are provided at building exits, exit stairs, along egress routes, exit discharges throughout the factory.

Replace all gates / sliding doors along the means of egress with side-hinged, swinging egress doors.

Within 1 month

If locks are required for security reasons, utilize special door locking features complying with NFPA 101.





F-9 Egress

The east exit on all floor and the stairs is less than the required width.

Increase exit opening to at least the minimum (32 inches) required by code.

Within 3 months





F-10	Fire Protection	The fire alarm system is antiquated, not a listed system, and does not provide alarm and notification features consistent with acceptable standards.	Replace the fire alarm system with a new, listed addressable fire alarm system in accordance with NFPA 72.	Design within 4 months, install within 9 months
------	-----------------	--	--	---





- | | | | | |
|------|-----------------|--|---|-----------------|
| F-11 | Fire Protection | Inspection, testing, and maintenance of the fire alarm system is not in accordance with NFPA 72. | Inspect, test and maintain the fire alarm system, and keep written records on-site, in accordance with NFPA 72. | Within 3 months |
|------|-----------------|--|---|-----------------|

Meditex Industries Limited
Weekly Fire Alarm Check List

Date	Fire Alarm Checking Point	Time	Name & Designation of Checking person	Signature
06.01.14	Generator Room	12:10	Md. Masudul Alam A.S.M.	[Signature]
13.01.14	Ground Floor	12:25	Md. Masudul Alam A.S.M.	[Signature]
20.01.14	1st Floor	13:15	Hudiyah Begum	[Signature]
27.01.14	2nd Floor	13:20	S.M. Samiul Islam A.S.M.	[Signature]
03.02.14	Ground Floor	13:05	S.M. Samiul Islam A.S.M.	[Signature]
10.02.14	2nd Floor	13:17	Md. Masudul Alam A.S.M.	[Signature]
17.02.14	1st Floor	13:35	S.M. Samiul Islam A.S.M.	[Signature]
24.02.14	1st Floor	13:40	Md. Masudul Alam A.S.M.	[Signature]
02.03.14	Ground Floor	13:10	Hudiyah Begum	[Signature]
09.03.14	2nd Floor	13:25	Md. Masudul Alam A.S.M.	[Signature]
16.03.14	Fire Control Room	13:40	S.M. Samiul Islam A.S.M.	[Signature]
23.03.14	2nd Floor	13:35	Md. Masudul Alam A.S.M.	[Signature]
30.03.14	1st Floor	13:45	S.M. Samiul Islam A.S.M.	[Signature]
06.04.14	Fire Control Room	13:20	Md. Masudul Alam A.S.M.	[Signature]

- | | | | | |
|------|-----------------|--|---|-----------------|
| F-12 | Fire Protection | Inspection, testing, and maintenance of the fire alarm system is not in accordance with NFPA 72. | Inspect, test and maintain the fire alarm system, and keep written records on-site, in accordance with NFPA 72. | Within 3 months |
|------|-----------------|--|---|-----------------|

F-13	Fire Protection	The building is equipped with single-station smoke alarms. Smoke alarm activation sounds only a local alarm and does not provide automatic fire alarm notification of occupants.	Remove single-station smoke alarms. Provide automatic smoke detection throughout the building, tied into the fire alarm system, in accordance with NFPA 72.	Within 6 months
------	-----------------	--	---	-----------------



F-14	Egress Lighting	Based on the number and location of emergency lights observed, adequate illumination levels are not anticipated along egress routes on ground or first floor.	Test the emergency lighting system on each floor and provide additional emergency fixtures to provide adequate illumination along the means of egress. Provide a minimum illumination of 10 lux at the floor level within exit stairs and exit discharge paths and minimum 2.5 lux along exit access aisles.	Within 3 months
------	-----------------	---	--	-----------------



F-15 Egress Lighting

Based on the number and location of emergency lights observed, adequate illumination levels are not anticipated along egress routes. This was observed on all floors.

Test the emergency lighting system on each floor and provide additional emergency fixtures to provide adequate illumination along the means of egress. Provide a minimum illumination of 10 lux at the floor level within exit stairs and exit discharge paths and minimum 2.5 lux along exit access aisles.

Within 3 months



F-16	Egress Lighting	Exit signage not illuminated floor 4 east exit, floor 1 south exit.	Regularly inspect all exit signage and replace/install lights as needed to illuminate signs.	Within 3 months
------	-----------------	---	--	-----------------



Table 2. Findings And Recommendations - Building #2

No.	Category	Finding	Recommendation	Remediation Timeframe
F-1	Fire Rated Construction	The sub station and generator room is not separated by fire-rated construction openings, non-rated doors, penetrations.	Separate the sub station and generator room by a minimum 2-hr fire-rated construction. Seal and/or protected all openings to maintain the required fire separations	Within 3 months







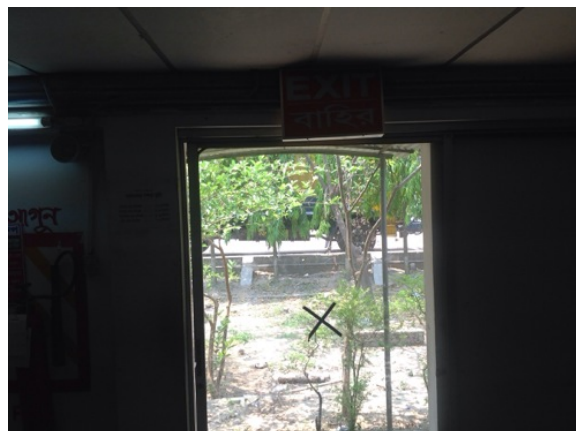
F-2	Egress	Storage was located in the exit stair.	Remove all storage from exit stairs and egress paths.	Immediate
-----	--------	--	---	-----------



F-3	Fire Protection	No fire detection system in the facility (child care were people are sleeping).	Install a fire detection system that meets current NFPA standards for the occupancy.	Within 3 months
-----	-----------------	---	--	-----------------

Table 3. Findings And Recommendations - Shed #4

No.	Category	Finding	Recommendation	Remediation Timeframe		
F-1	Egress	Egress doors / gates with locking features are provided at building exits, exit stairs, along egress routes, exit discharge.	Remove locking features from all egress doors / gates. If locks are required for security reasons, utilize special door locking features complying with NFPA 101.	Immediate		
		F-2	Egress	Collapsible gates / sliding doors are provided at building exits, exit stairs, along egress routes, exit discharge.	Replace all gates / sliding doors along the means of egress with side-hinged, swinging egress doors. If locks are required for security reasons, utilize special door locking features complying with NFPA 101.	Within 1 month



F-3	Fire Protection	The fire alarm system is antiquated, not a listed system, and does not provide alarm and notification features consistent with acceptable standards.	Replace the fire alarm system with a new, listed addressable fire alarm system in accordance with NFPA 72.	Design within 4 months, install within 9 months
-----	-----------------	--	--	---



F-4	Fire Protection	Inspection, testing, and maintenance of the fire alarm system is not in accordance with NFPA 72.	Inspect, test and maintain the fire alarm system, and keep written records on-site, in accordance with NFPA 72.	Within 3 months
-----	-----------------	--	---	-----------------

F-5	Fire Protection	The building is equipped with single-station smoke alarms. Smoke alarm activation sounds only a local alarm and does not provide automatic fire alarm notification of occupants.	Remove single-station smoke alarms. Provide automatic smoke detection throughout the building, tied into the fire alarm system, in accordance with NFPA 72.	Within 6 months
-----	-----------------	--	---	-----------------



F-6	Egress Lighting	Based on the number and location of emergency lights observed, adequate illumination levels are not anticipated along egress routes.	Test the emergency lighting system on each floor and provide additional emergency fixtures to provide adequate illumination along the means of egress. Provide a minimum illumination of 10 lux at the floor level within exit stairs and exit discharge paths and minimum 2.5 lux along exit access aisles.	Within 3 months
-----	-----------------	--	--	-----------------

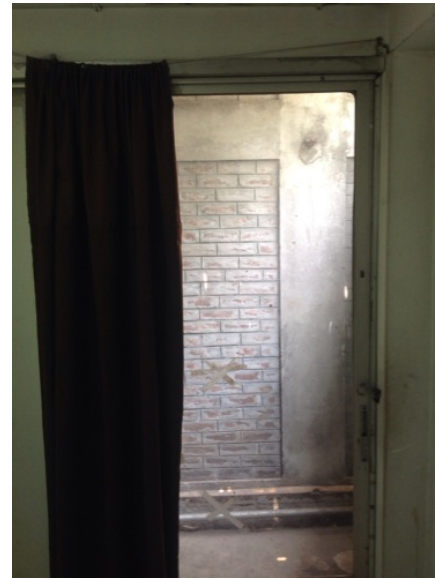
Table 4. Findings And Recommendations - Shed #3

No.	Category	Finding	Recommendation	Remediation Timeframe
-----	----------	---------	----------------	--------------------------

F-1	Fire Rated Construction	The dining room and the factory floor are separated by a glass wall.	Construct fire rated wall that meets NFPA standards for this type occupancy.	Within 6 months
-----	-------------------------	--	--	-----------------



F-2	Egress	Egress doors / gates with locking features are provided at building exits, exit stairs, along egress routes, exit discharge.	Remove locking features from all egress doors / gates. If locks are required for security reasons, utilize special door locking features complying with NFPA 101.	Immediate
-----	--------	--	--	-----------



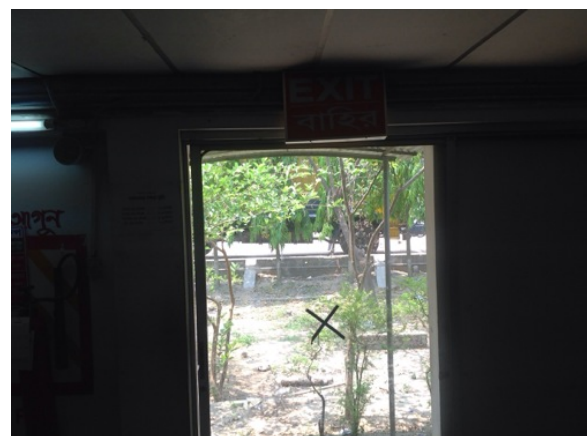
F-3 Egress

Collapsible gates / sliding doors are provided at building exits, exit stairs, along egress routes, exit discharge.

Replace all gates / sliding doors along the means of egress with side-hinged, swinging egress doors.

Within 1 month

If locks are required for security reasons, utilize special door locking features complying with NFPA 101.



F-4	Fire Protection	The fire alarm system is antiquated, not a listed system, and does not provide alarm and notification features consistent with acceptable standards.	Replace the fire alarm system with a new, listed addressable fire alarm system in accordance with NFPA 72.	Design within 4 months, install within 9 months
-----	-----------------	--	--	---



F-5	Fire Protection	Inspection, testing, and maintenance of the fire alarm system is not in accordance with NFPA 72.	Inspect, test and maintain the fire alarm system, and keep written records on-site, in accordance with NFPA 72.	Within 3 months
-----	-----------------	--	---	-----------------

F-6	Fire Protection	The building is equipped with single-station smoke alarms. Smoke alarm activation sounds only a local alarm and does not provide automatic fire alarm notification of occupants.	Remove single-station smoke alarms. Provide automatic smoke detection throughout the building, tied into the fire alarm system, in accordance with NFPA 72.	Within 6 months
-----	-----------------	--	---	-----------------



F-7	Egress Lighting	Based on the number and location of emergency lights observed, adequate illumination levels are not anticipated along egress routes.	Test the emergency lighting system on each floor and provide additional emergency fixtures to provide adequate illumination along the means of egress. Provide a minimum illumination of 10 lux at the floor level within exit stairs and exit discharge paths and minimum 2.5 lux along exit access aisles.	Within 3 months
F-8	Egress Lighting	Exit signage not illuminated south exit.	Regularly inspect all exit signage and replace/install lights as needed to illuminate signs.	Within 3 months

