

# FIRE SAFETY INSPECTION REPORT

**NINE 2 NINE INTIMATES LIMITED**

**ACCORD ID: 12867**

**35/A-B Kalurghat Heavy Industrial Area, Chittagong, Bangladesh  
(22.390726, 91.872678)**

**OTHER FACTORY (S): YUNUSCO T&A (BD) LIMITED (UNIT-2)**



**Inspected By: Dilip Kumar Mondal and Ferdaus Jaman**

**Date: 18 June, 2017**

# Fire Safety Inspection Report

NINE 2 NINE INTIMATES LTD.

## Introduction:

Nine 2 Nine Intimates Ltd. was surveyed for fire safety on 18/06/2017 by The Accord Inspection Team. The purpose of the survey was to identify significant fire safety issues and to provide recommendations for remediation based on applicable standards specified by the Accord. The scope of this initial fire safety inspection was limited to the review and identification of major fire safety issues. The inspection did not include identification of minor deficiencies, which will be further addressed as part of follow-up inspections.

## Limitations:

The information in this fire safety inspection report was obtained during a visit to the facility and during interviews with local factory management. It has not been possible to provide independent verification for all the information and data collected, and therefore, The Accord cannot accept general responsibility for omissions or errors arising from inaccuracies in this report from the information obtained.

The findings and recommendations in this report are not intended to imply, guarantee, ensure or warrant compliance with any government regulations. Additionally, the results do not imply in any way that compliance with the findings or recommendations as stated in this report will eliminate all hazards, risks or exposures or that hazards, risks or exposures not referred to in this report do not exist. Compliance with the findings and recommendations stated in this report does not relieve the factory owner from obligation to comply with specific project requirements, industry standards, or the provisions of any local government regulations.



**General Factory Information:**

**Factory Building Name: Main Production Building**

**Factory Address: 35/A-B Kalurghat Heavy Industrial Area, Chittagong, Bangladesh**

**Points of contact:**

<p>Name: Mr. Shahedul Islam Chowdhury Designation: AGM (HR., Compliance &amp; Admin) Mobile No: +88 01819305259 E-mail: shahedul_i@ctg.yunusco.com</p>	<p>Name: Md. Hanif Bhuiyan Khokon Designation: Manager ( HR.. Admin &amp; Compliance ) Mobile No: +88 01988844367 E-mail: hanif@nine2nineintimates.com</p>
--	--



## Findings & Recommendations :

Following table summarizes the major fire safety issues identified during the inspection. Recommendations have been provided to address each issue. An implementation schedule shall be developed by the factory to remediate each of the findings. The specific timing of improvements, including any requested extensions due to design/ installation constraints, shall be submitted to the Accord for approval.

SI No.	Category	Findings	Required Action	Remediation Time Frame
1	Fire Rated Construction	The exit stairs enclosures are not separated from work areas and other spaces on each floor by fire-rated construction(Non rated doors, unsealed penetrations and openings etc.).	Provide minimum 1-hr rated doors for buildings with 3 or fewer stories and 1.5-hr fire rated doors for buildings that are 4 or more stories. Seal all unprotected openings to separate the exit stairs from work areas and other building spaces on all floor levels. Ensure that the fire doors are self-closing and positive latching and that they are provided with fire exit (panic) hardware where serving production floors. If fire doors are required to be held open for functional reasons, provide automatic closing devices tied to the fire alarm system. Once fire doors are installed, every door in a stair enclosure serving more than 5 stories shall be provided with re-entry unless it meets.	Within 3 months





2	Fire Rated Construction	<p>The generator, sub-station &amp; air compressor rooms are not separated by fire rated construction (openings, non-rated doors, penetrations) Specify location(s) <b>Location:</b> Generator-Utility building, Sub-station-N-W &amp; N-E &amp; compressor-North side of the main building.</p>	<p>Separate the generator, sub-station &amp; air compressor room by a minimum 2-hr fire rated construction. Seal and/or protected all openings to maintain fire separations.</p>	<p>Within 3 months</p>
---	-------------------------	--	--	------------------------



3	Fire Rated Construction	<p>Areas used for combustible storage are not separated by fire rated construction.</p> <p><b>Location:</b> 2nd floor.</p>	<p>Provide dedicated storage rooms separated by minimum 1-hr fire-rated construction.</p> <p>Where separate storage rooms are not feasible, provide defined storage areas and limit the storage arrangement as follows:</p> <ul style="list-style-type: none"> <li>- Maximum height of 2.4m and maximum area of 23m<sup>2</sup></li> <li>- If sprinkler protected: maximum height of 3.66m and maximum area of 93m<sup>2</sup></li> </ul> <p>Separate areas of unenclosed combustible storage by a minimum clear distance of 3m.</p>	Within 3 months
---	-------------------------	--	--	-----------------



4	Fire Rated Construction	<p>The elevator shafts (Cargo lift) discharges inside the production floor. [Unsealed penetrations &amp; openings]</p> <p><b>Location:</b> S-W side of the building.</p>	<p>Provide a minimum 2-hr fire rated construction to separate the elevator shaft from each floor level. Seal all penetrations and openings in floors/ceiling assemblies to maintain the fire separation.</p>	Within 3 months
---	-------------------------	--	--	-----------------





5	Fire Rated Construction	<p>The exit discharge path (serving N-E exit) is less than 10 ft. wide and is not separated from the sub-station room.</p> <p><b>Location:</b> West side of the building.</p>	<p>Seal all penetrations and openings to the interior of the building along the discharge path, up to a height of 10 ft., to provide a minimum 1-hr fire separation.</p>	<p>Within 6 months</p>
---	-------------------------	---	--	------------------------



6	Fire Rated Construction	Unsealed penetrations and openings are located in the exit stair enclosures <b>Location:</b> South-East side stair.	Seal all penetrations and openings in exit stair enclosure walls to maintain the fire separations.	Within 3 months
---	-------------------------	--	--	-----------------

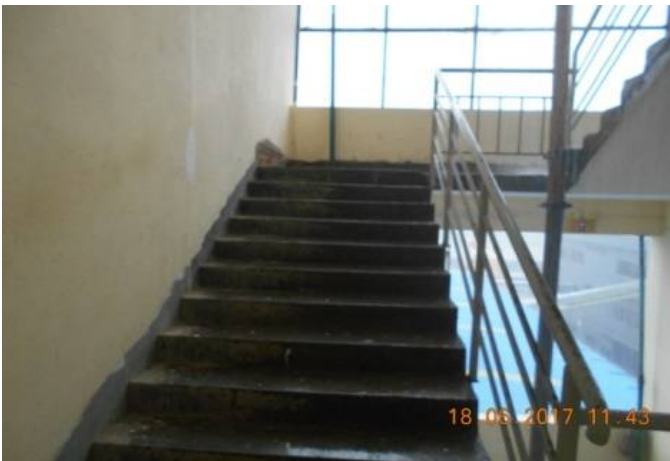


7	Fire Rated Construction	Unsealed penetrations and openings are located in the fire rated floor/ceiling assemblies. <b>Location:</b> East side of the electrical riser.	Seal all penetrations and openings in floors/ceiling assemblies to maintain the fire separation.	Within 3 months
---	-------------------------	---	--	-----------------





8	Egress	Handrails are not provided on both sides of each exit stairs on all floors. Having handrails on one side of said staircase, may pose as a falling hazard during evacuation. Or, Handrails are not provided at exit stairs.	Provide handrails on both sides of the exit stair. New handrails shall have a minimum height of 865 mm (34 in.) and a maximum height of 965 mm (38 in.) as measured from the leading edge of the tread. Intermediate handrails shall be provided when the stair width exceeds 2.2 m (87 in.)	Within 3 months
---	--------	---	---	-----------------



9	Egress	Building did not have stair designation signs or occupant load signs at the required location.	Provide stair designation signs and occupant load signs at the required locations.	Immediate
---	--------	--	--	-----------



10	Egress	Storage was located in exit stairs enclosure.	Remove storage from the exit stairs and egress path	Immediate
----	--------	---	---	-----------





11	Fire Detection and Alarm System	The fire detection and alarm system is antiquated, not a listed system and does not provide alarm and notification features consistent with acceptable standards.	Replace the fire detection system with a new, listed addressable fire detection system in accordance with NFPA 72.	Design within 4 months, Install within 9 months
----	---------------------------------	---	--	---



12	Fire Protection System	The high-rise building has an occupied floor greater than 23 meter (75 feet) and is not provided with automatic sprinkler protection system. The large occupant loads, heavy fuel loading, and anticipated extended egress times warrant sprinkler protection.	Install a new combined sprinkler & standpipe protection system, fire pump & fire department connection in accordance with NFPA 13, 14, 20, 22 & 24. A class I system shall be permitted in buildings protected throughout by an automatic sprinkler system.	Design within 6 months, install within 12 months
----	------------------------	--	---	--



13	Fire Detection and Alarm System-ITM	Inspection, testing, and maintenance (ITM) for the fire detection system is not in accordance with NFPA 72.	Inspect, test and maintain the fire detection system, and keep written records on-site, in accordance with NFPA 72.	Within 3 months (After complete installation)
14	Fire Protection System (ITM)	Inspection, testing and maintenance (ITM) of the sprinkler system is not in accordance with NFPA 25.	Inspect, test and maintain the sprinkler system and keep written records on-site, in accordance with NFPA 25 and ACCORD standards.	Within 3 months (After complete installation)



15	Fire Extinguishers (ITM)	Inspection, testing and maintenance of portable fire extinguishers is not in accordance with NFPA 10.	Inspect, test and maintain the portable fire extinguishers and keep written records onsite, in accordance with NFPA 10 and ACCORD standards.	Within 3 months
16	Egress Lighting	Manual on-off switch facility available for emergency lights.	Remove manual on/off switches from emergency lighting units/ exit signs to prevent them from being switched off.	Within 1 month



17	Emergency Lighting- ITM	Inspection, testing, and maintenance (ITM) for the emergency lighting system were not in accordance with The ACCORD standard.	Inspect, test and maintain the emergency lighting system in the accordance with The ACCORD standard. Keep written records on-site.	Within 3 months
----	-------------------------	---	---	-----------------



18	Egress Lighting	<p>The directional signs are not provided where there is a change in direction and where the continuation of the egress path is not obvious.</p> <p>Location: North side of the 2nd floor of the main building.</p>	<p>Install illuminated directional sign where there is a change in the direction of the path of travel.</p>	<p>Within 1 month</p>
----	-----------------	---	---	-----------------------



19	Egress Lighting	<p>Based on the number and location of emergency lights/exit signs observed, adequate illumination levels are not anticipated along egress routes.</p> <p><b>Location:</b> 2nd floor &amp; exit stair of the main building &amp; dining of PFL building.</p>	<p>Test the emergency lighting system on each floor and provide additional emergency fixtures to provide adequate illumination along the means of egress. Provide a minimum illumination of 10 lux at the floor level within exit stairs and exit discharge paths and minimum 2.5 lux along exit access aisles.</p>	<p>Within 3 months</p>
----	-----------------	--	---	------------------------



